

Tyger Oaks Homestead

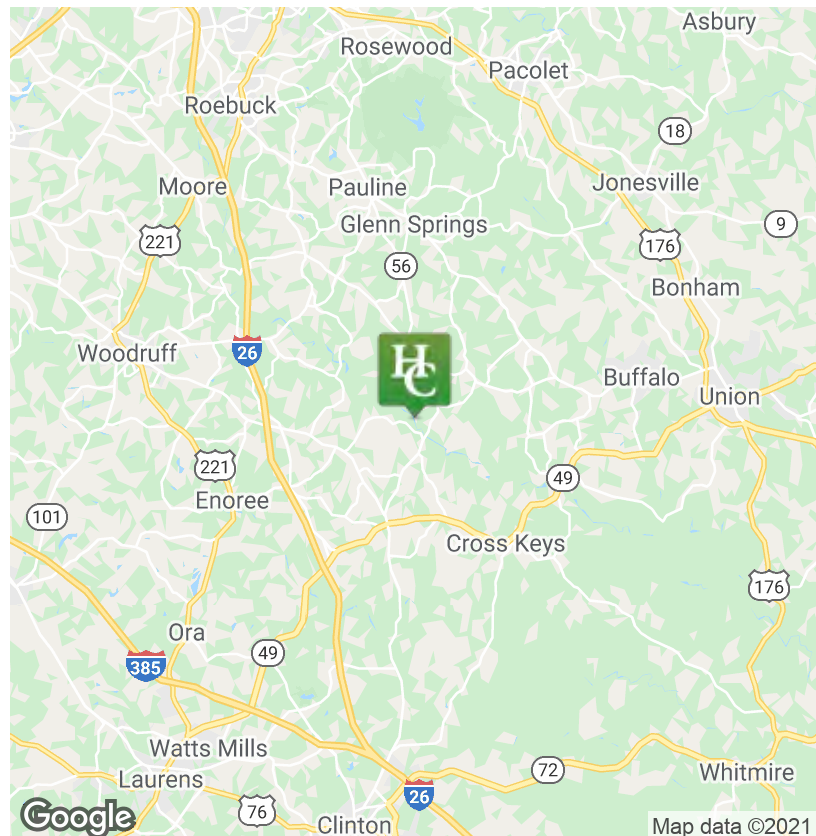
2500 Grace Chapel Road Enoree, SC 29335



\$215,000

Land | ±19.771 Acres

- A portion of Spartanburg County
TM #4-52-00-027.01
- Frontage Road : ±500 Linear Feet of Road
Frontage on Grace Church Road
- Zoned for Award Winning Schools in Spartanburg
County – District 4
- Directly Located on the Tyger River
- ± 4 Minutes from Downtown Woodruff
- Mature Timber for Private Residence Hardwoods
- Flat | Level Topograph
- Water and Power available
- *Acreage and all other detailed information to be
verified by buyer or buyer's agent



✉ Dallas Wright
+1 843 505 2644
dwright@naiearlefurman.com

No Warranty Or Representation, Express Or Implied, Is Made As To The Accuracy Of The Information Contained Herein, And The Same Is Submitted Subject To Errors, Omissions, Change Of Price, Rental Or Other Conditions, Prior Sale, Lease Or Financing, Or Withdrawal Without Notice, And Of Any Special Listing Conditions Imposed By Our Principals No Warranties Or Representations Are Made As To The Condition Of The Property Or Any Hazards Contained Therein Are Any To Be Implied.

📍 101 E Washington St
Greenville, SC 29601
naiearlefurman.com

FOR SALE

2500 Grace Chapel Road Enoree, SC 29335



Property Overview

Come build your dream estate at Tyger Oaks Homestead. In addition to its mature hardwoods and beautiful landscape, this unparalleled property has calming riverside frontage on the Tyger River. What is truly rare about a property like this is the proximity to nearby cities. Tyger Oaks Homestead is about 30 minutes from downtown Spartanburg, ± 35 minutes from downtown Greenville, and less than 5 minutes from the up and coming, Downtown Woodruff. The property is also an ideal setting for hunters and those who simply love the outdoors. Schedule a showing to see what life at Tyger Oaks Homesite is all about.

Location Overview

± 2 Miles to Downtown Woodruff

± 30 Minutes to Downtown Spartanburg

± 35 Minutes to Downtown Greenville

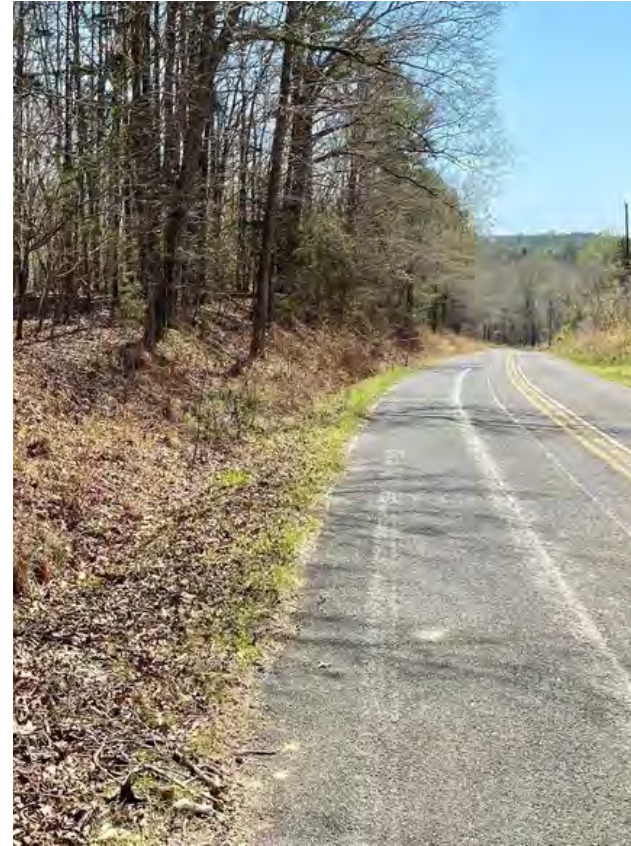
✉ Dallas Wright
+1 843 505 2644
dwright@naiearlefurman.com

No Warranty Or Representation, Express Or Implied, Is Made As To The Accuracy Of The Information Contained Herein, And The Same Is Submitted Subject To Errors, Omissions, Change Of Price, Rental Or Other Conditions, Prior Sale, Lease Or Financing, Or Withdrawal Without Notice, And Of Any Special Listing Conditions Imposed By Our Principals No Warranties Or Representations Are Made As To The Condition Of The Property Or Any Hazards Contained Therein Are Any To Be Implied.



FOR SALE

2500 Grace Chapel Road Enoree, SC 29335



✉ **Dallas Wright**
+1 843 505 2644
dwright@naiearlefurman.com

No Warranty Or Representation, Express Or Implied, Is Made As To The Accuracy Of The Information Contained Herein, And The Same Is Submitted Subject To Errors, Omissions, Change Of Price, Rental Or Other Conditions, Prior Sale, Lease Or Financing, Or Withdrawal Without Notice, And Of Any Special Listing Conditions Imposed By Our Principals No Warranties Or Representations Are Made As To The Condition Of The Property Or Any Hazards Contained Therein Are Any To Be Implied.

📍 **101 E Washington St**
Greenville, SC 29601
naiearlefurman.com