

Craig Road Tract

144 Craig Road, Fountain Inn, SC 29644

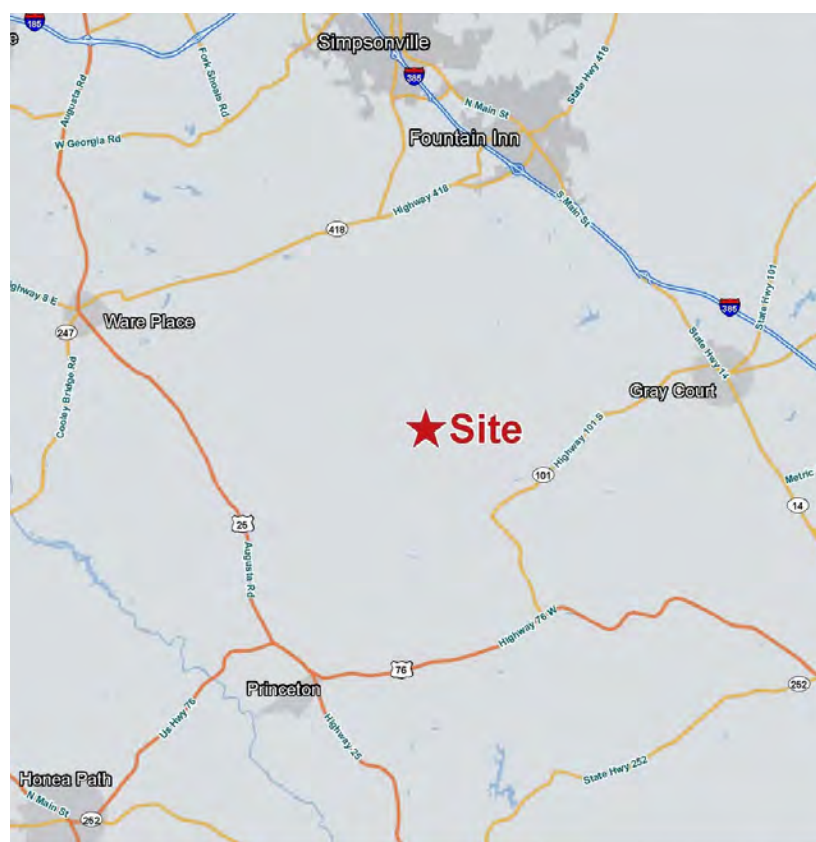


\$1,264,500



Property Features

- Greenville County Tax Map # 0565010101500
- +-84.30 Acres
- Asking Price: \$15K/acre
- +-2600 ft. of frontage on Craig Road
- Over 1/3 of a mile of hardwood creek bottom
- +-62 acres of planted loblolly ready for a 1st thinning
- Excellent deer and turkey hunting opportunities
- +-10-15 minute commute from Fairview Road retail including Publix, Target, CVS, Walmart and the new 53,000sf Bons Secours medical campus
- +-30 minutes from downtown Greenville



✉ Rusty Hamrick
+1 864 232 9040
rhamrick@naiearlefurman.com

No Warranty Or Representation, Express Or Implied, Is Made As To The Accuracy Of The Information Contained Herein, And The Same Is Submitted Subject To Errors, Omissions, Change Of Price, Rental Or Other Conditions, Prior Sale, Lease Or Financing, Or Withdrawal Without Notice, And Of Any Special Listing Conditions Imposed By Our Principals No Warranties Or Representations Are Made As To The Condition Of The Property Or Any Hazards Contained Therein Are Any To Be Implied.

📍 101 E Washington St
Greenville, SC 29601
naiearlefurman.com

Property Description

144 Craigo Road Fountain Inn, SC 29644



Property Overview

The Craigo Road Tract is a quality hunting and recreational property that also offers a timber investment component. +-62 acres of the property consists of +-10 year old loblolly that will be ready for a first thinning in a few years. Towards the northwest boundary line, a nice hardwood creek bottom runs through the interior of the property for over 1/3 of a mile. This area is excellent deer habitat and sign is abundant. The property is located near the Laurens County line and is +-30 minutes from downtown Greenville and 10-15 minutes from the Fairview Road retail district on the south side of I-385. Some structures from the old homestead remain and include a 4BR home (2,480 SF).

Location Overview

+-10-15 minute commute from Fairview Road retail including Publix, Target, CVS, Walmart and the new 53,000sf Bons Secours medical campus
+-30 minutes from downtown Greenville

Property Photos

144 Craigo Road Fountain Inn, SC 29644



✉ Rusty Hamrick
+1 864 232 9040
rhamrick@naiearlefurman.com

No Warranty Or Representation, Express Or Implied, Is Made As To The Accuracy Of The Information Contained Herein, And The Same Is Submitted Subject To Errors, Omissions, Change Of Price, Rental Or Other Conditions, Prior Sale, Lease Or Financing, Or Withdrawal Without Notice, And Of Any Special Listing Conditions Imposed By Our Principals No Warranties Or Representations Are Made As To The Condition Of The Property Or Any Hazards Contained Therein Are Any To Be Implied.

📍 101 E Washington St
Greenville, SC 29601
naiearlefurman.com

Property Photos

144 Craigo Road Fountain Inn, SC 29644



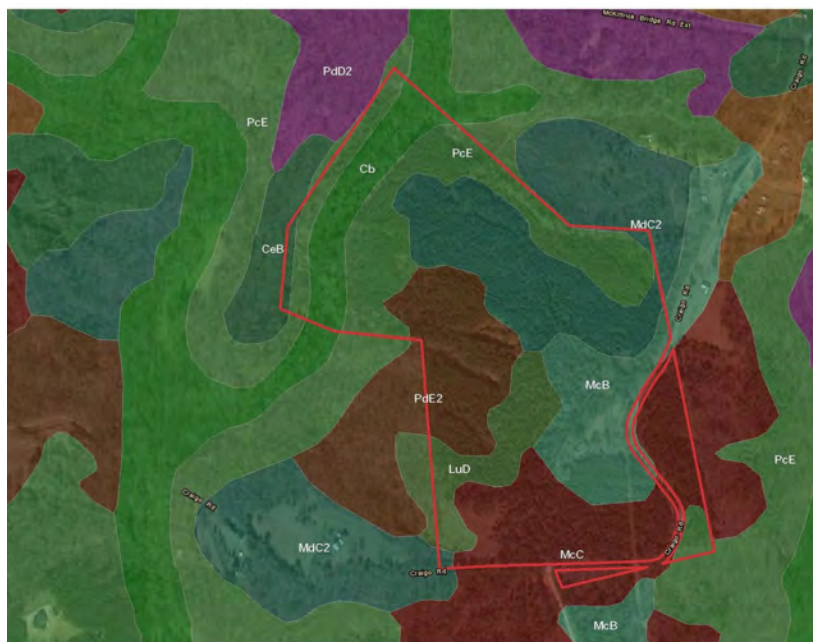
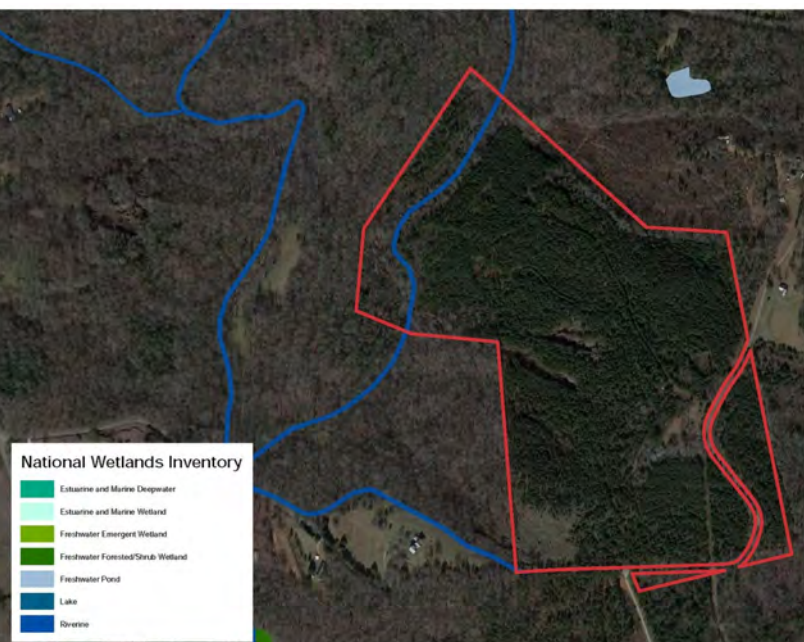
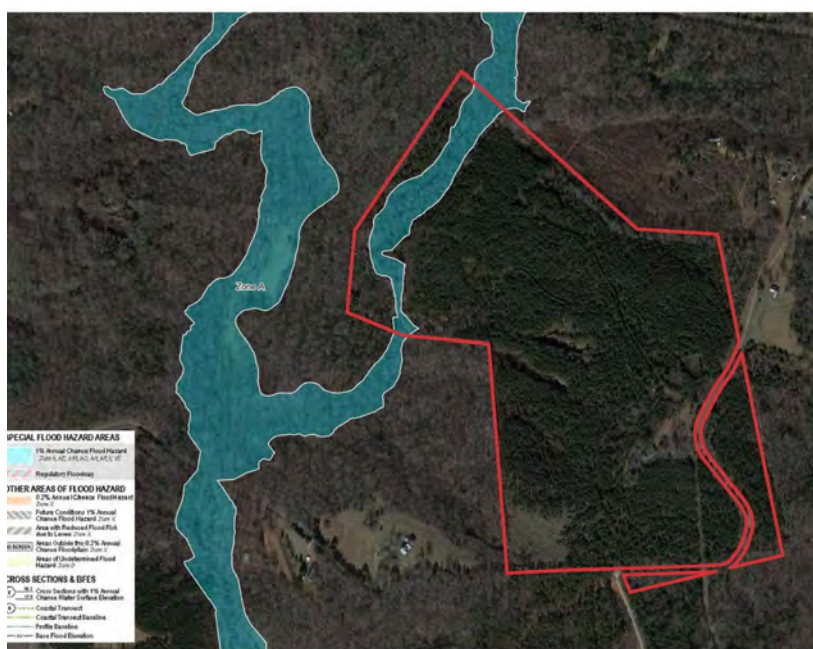
✉ Rusty Hamrick
+1 864 232 9040
rhamrick@naiearlefurman.com

No Warranty Or Representation, Express Or Implied, Is Made As To The Accuracy Of The Information Contained Herein, And The Same Is Submitted Subject To Errors, Omissions, Change Of Price, Rental Or Other Conditions, Prior Sale, Lease Or Financing, Or Withdrawal Without Notice, And Of Any Special Listing Conditions Imposed By Our Principals No Warranties Or Rep- resentations Are Made As To The Condition Of The Property Or Any Hazards Contained Therein Are Any To Be Implied.

📍 101 E Washington St
Greenville, SC 29601
naiearlefurman.com

Map Set

144 Craigo Road Fountain Inn, SC 29644



✉ Rusty Hamrick
+1 864 232 9040
rhamrick@naiearlefurman.com

No Warranty Or Representation, Express Or Implied, Is Made As To The Accuracy Of The Information Contained Herein, And The Same Is Submitted Subject To Errors, Omissions, Change Of Price, Rental Or Other Conditions, Prior Sale, Lease Or Financing, Or Withdrawal Without Notice, And Of Any Special Listing Conditions Imposed By Our Principals No Warranties Or Representations Are Made As To The Condition Of The Property Or Any Hazards Contained Therein Are Any To Be Implied.

📍 101 E Washington St
Greenville, SC 29601
naiearlefurman.com