



Reedy River Farms
±358 Acres



1535 Dunklin Bridge Rd

Fountain Inn, South Carolina 29644

Property Features

- ±7,500 feet of frontage on the Reedy River (the river runs through the property dividing it into parcels of ±218 acres & ±140 acres)
- ±2,800 SF home; ±1,000 SF cabin; caretakers house; large pole barn & storage shed; screened in cook shed w/ brick oven
- ±180 acres of mature hardwoods loaded with white oaks
- ±70 acres of merchantable pines
- ±40 acres of pasture/food plots including two large fields adjacent to the river
- Sale Price: \$1,500,000.00 (Entire ±358 Acre Property)
- Sale Price: \$950,000.00 (±218 Acre Portion)



SALE PRICE: \$1,500,000.00

Rusty Hamrick

864 232 9040
rhamrick@naief.com

Huff Creek Properties is a timber
and recreational land division of

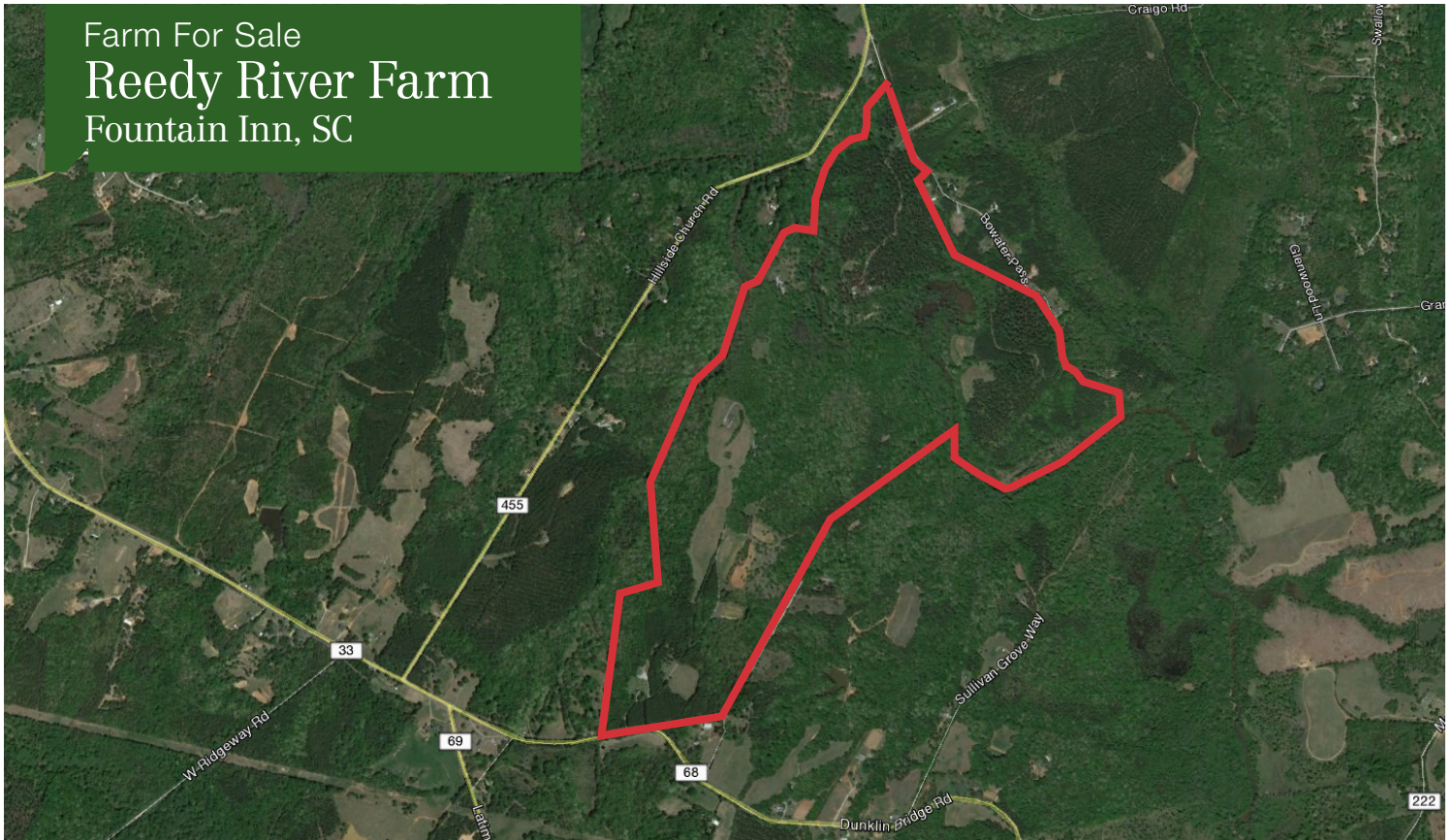
NAI Earle Furman

The information contained herein has been given to us by the owner of the property or other sources we deem reliable. We have no reason to doubt its accuracy, but we do not guarantee it. All information should be verified prior to purchase or lease.

101 E Washington Street Suite 400
Greenville, South Carolina 29601
864 232 9040

naiearlefurman.com huffcreekproperties.com

Farm For Sale
Reedy River Farm
Fountain Inn, SC



Huff Creek Properties is a timber and recreational land division of
NAI Earle Furman

101 E Washington Street Suite 400
Greenville, South Carolina 29601
864 232 9040

naiearlefurman.com huffcreekproperties.com

Farm For Sale
Reedy River Farm
Fountain Inn, SC



This property is a true hunter's paradise just 30 minutes from downtown Greenville!! The Reedy River meanders for approximately 1.5 miles through the middle of the property creating an extraordinary wildlife corridor that is complemented by large privet thickets, two large bottom fields, ± 9 acre of swamps, and a giant stand of beautiful hardwoods loaded with white oaks. A 2,800 square foot home sits on a bluff on the south side of the river and the north side has a 1,000 square foot rustic cabin that overlooks a cleared out bottom area adjacent to the river. Other improvements include a large pole barn on the south side, a storage shed on the north side, and a screened in cook shed complete with a brick oven that sits on a bluff next to the river. Excellent internal roads & trails allow for easy access to the entire property. In addition to all of these features are ± 70 acres of mature, merchantable pines as well as ± 40 acres of open pasture & food plots. Our 155 acre listing on Craigo Road is directly across Bowater Pass which is the northern boundary line for an opportunity to purchase 513 contiguous acres. Call today to schedule a showing on this premier upstate SC recreational & timber property!



101 E Washington Street Suite 400
Greenville, South Carolina 29601
864 232 9040

naiearlefurman.com huffcreekproperties.com