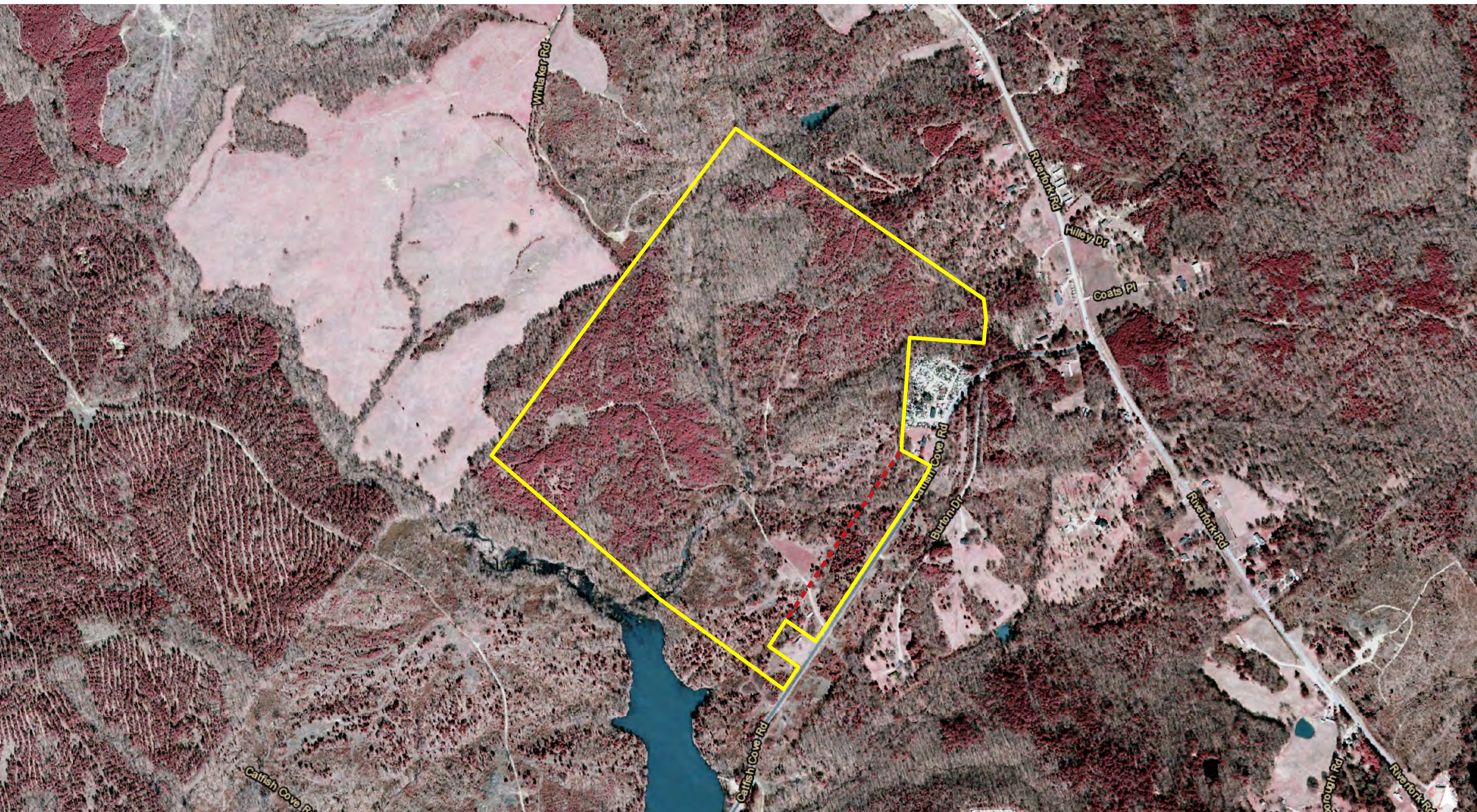




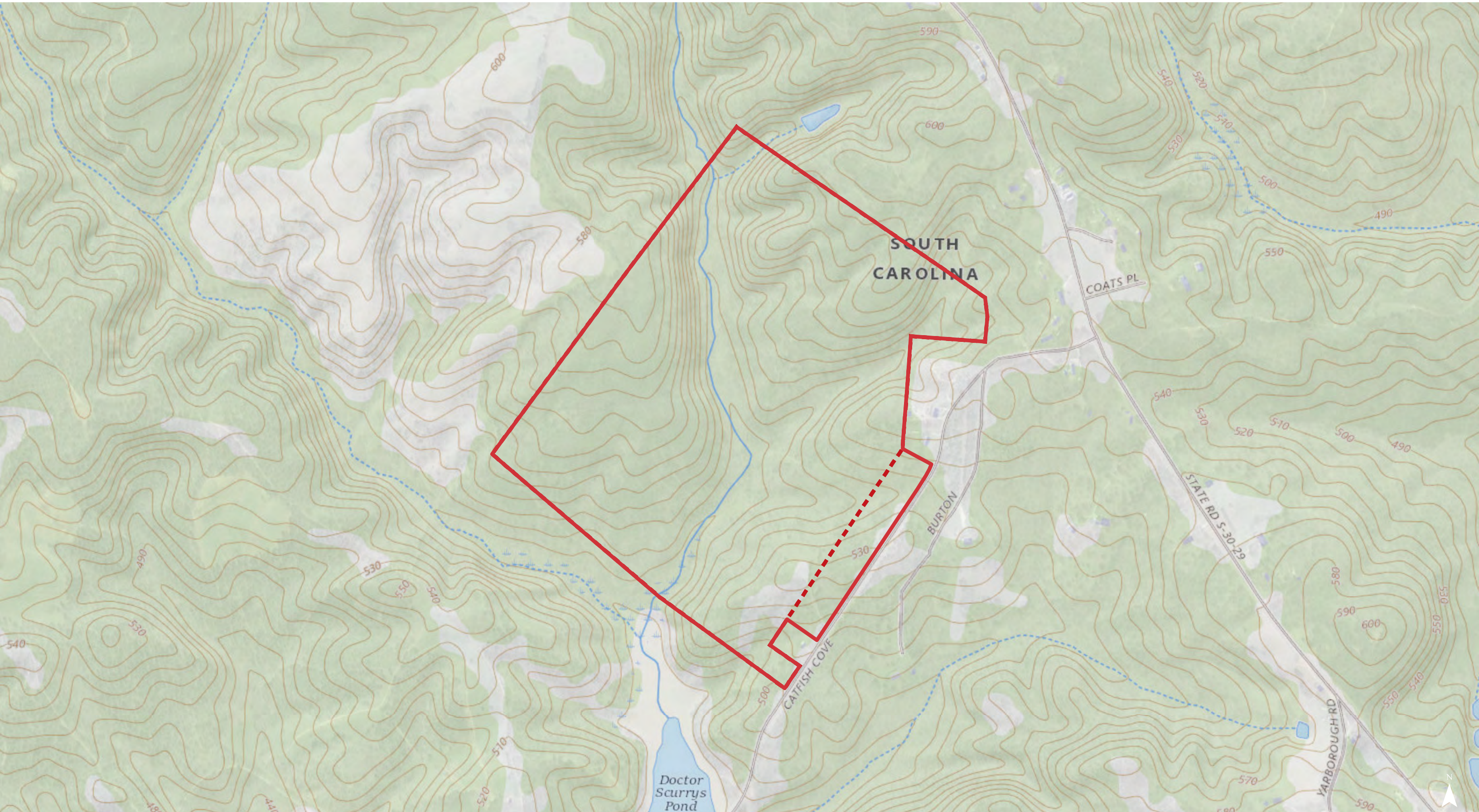
Map Updated: Monday, August 1, 2022. This information submitted is not guaranteed. Although obtained from reliable sources, all information should be confirmed prior to use or reliance upon the information. This document may not be reproduced in whole or in part without the express written consent of NAI Columbia.



Map Updated: Monday, August 1, 2022. This information submitted is not guaranteed. Although obtained from reliable sources, all information should be confirmed prior to use or reliance upon the information. This document may not be reproduced in whole or in part without the express written consent of NAI Columbia.



Map Updated: Monday, August 1, 2022. This information submitted is not guaranteed. Although obtained from reliable sources, all information should be confirmed prior to use or reliance upon the information. This document may not be reproduced in whole or in part without the express written consent of NAI Columbia.



Map Updated: Monday, August 1, 2022. This information submitted is not guaranteed. Although obtained from reliable sources, all information should be confirmed prior to use or reliance upon the information. This document may not be reproduced in whole or in part without the express written consent of NAI Columbia.



SPECIAL FLOOD HAZARD AREAS

- 1% Annual Chance Flood Hazard
Zone A, AE, A99, A0, AH, AR, X, VE
- Regulatory Floodway

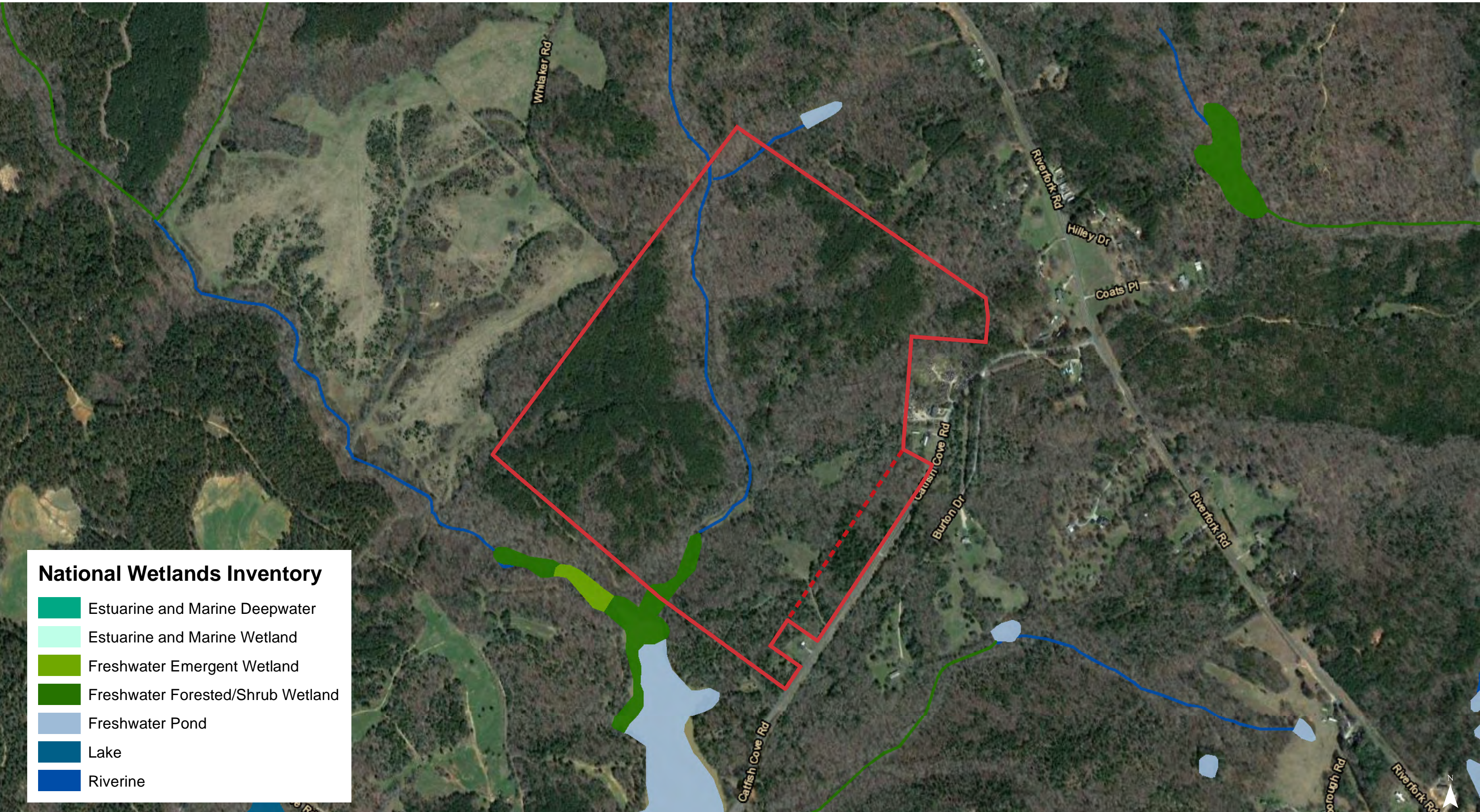
OTHER AREAS OF FLOOD HAZARD

- 0.2% Annual Chance Flood Hazard
Zone X
- Future Conditions 1% Annual Chance Flood Hazard
Zone X
- Area with Reduced Flood Risk due to Levee
Zone X
- NO SCREEN
Areas Outside the 0.2% Annual Chance Floodplain
Zone X
- Areas of Undetermined Flood Hazard
Zone D

CROSS SECTIONS & BFES

- 16.2
17.5
Cross Sections with 1% Annual Chance (Water Surface Elevation)
- Coastal Transect
- Coastal Transect Baseline
- Profile Baseline
- Base Flood Elevation

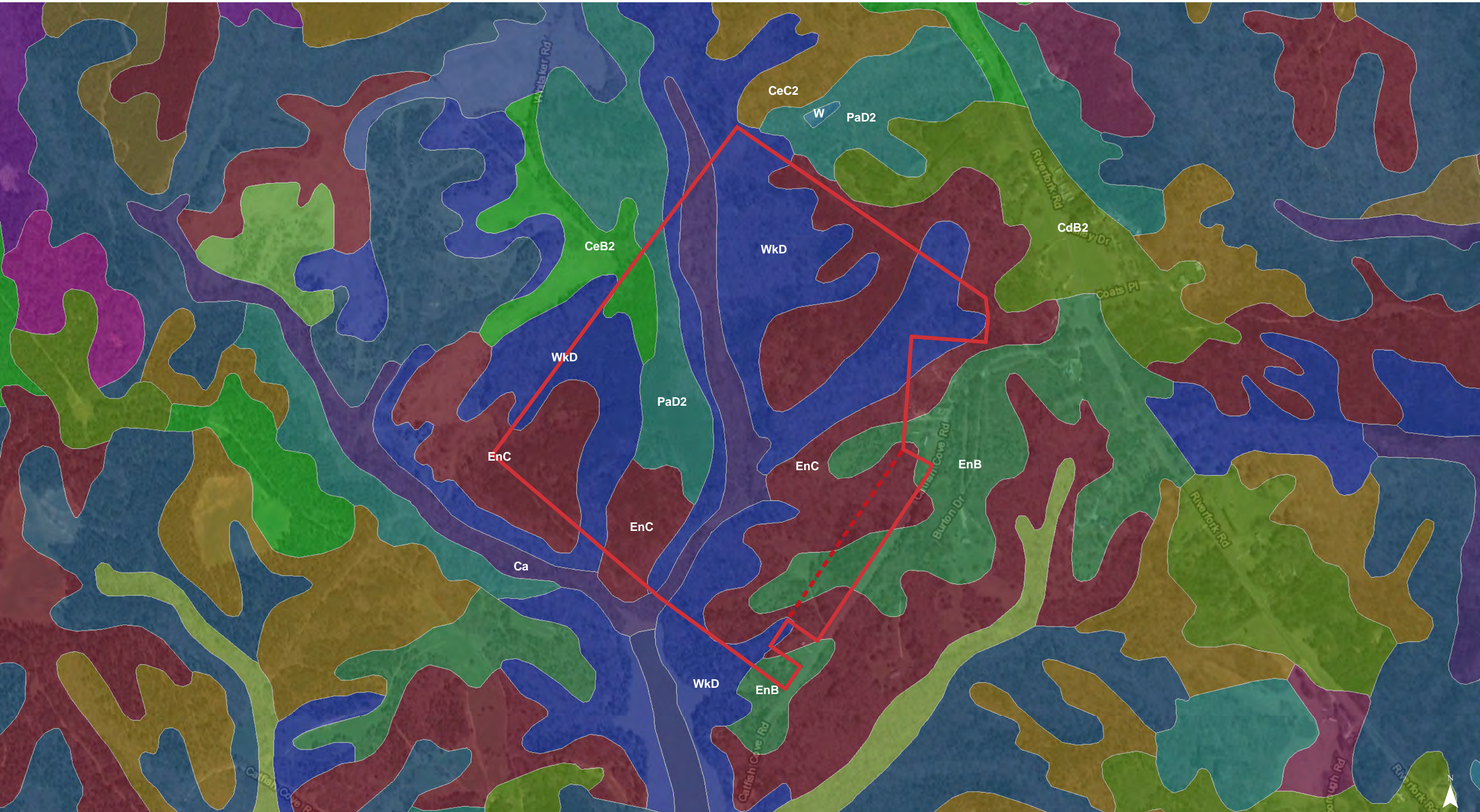
Map Updated: Monday, August 1, 2022. This information submitted is not guaranteed. Although obtained from reliable sources, all information should be confirmed prior to use or reliance upon the information. This document may not be reproduced in whole or in part without the express written consent of NAI Columbia.



National Wetlands Inventory

- Estuarine and Marine Deepwater
- Estuarine and Marine Wetland
- Freshwater Emergent Wetland
- Freshwater Forested/Shrub Wetland
- Freshwater Pond
- Lake
- Riverine

Map Updated: Monday, August 1, 2022. This information submitted is not guaranteed. Although obtained from reliable sources, all information should be confirmed prior to use or reliance upon the information. This document may not be reproduced in whole or in part without the express written consent of NAI Columbia.



Map Updated: Monday, August 1, 2022. This information submitted is not guaranteed. Although obtained from reliable sources, all information should be confirmed prior to use or reliance upon the information. This document may not be reproduced in whole or in part without the express written consent of NAI Columbia.

Map Unit Description (Brief, Generated)

Laurens County, South Carolina

[Minor map unit components are excluded from this report]

Map unit: Ca - Cartecay-Toccoa complex

Component: Cartecay (55%)

The Cartecay component makes up 55 percent of the map unit. Slopes are 0 to 2 percent. This component is on flood plains on piedmonts. The parent material consists of loamy alluvium. Depth to a root restrictive layer is greater than 60 inches. The natural drainage class is somewhat poorly drained. Water movement in the most restrictive layer is high. Available water to a depth of 60 inches is low. Shrink-swell potential is low. This soil is occasionally flooded. It is not ponded. A seasonal zone of water saturation is at 12 inches during January, February, March, April. Organic matter content in the surface horizon is about 2 percent. Nonirrigated land capability classification is 3w. This soil does not meet hydric criteria.

Component: Toccoa (40%)

The Toccoa component makes up 40 percent of the map unit. Slopes are 0 to 2 percent. This component is on piedmonts, flood plains. The parent material consists of loamy alluvium. Depth to a root restrictive layer is greater than 60 inches. The natural drainage class is moderately well drained. Water movement in the most restrictive layer is high. Available water to a depth of 60 inches is moderate. Shrink-swell potential is low. This soil is occasionally flooded. It is not ponded. A seasonal zone of water saturation is at 45 inches during January, February, March, April, December. Organic matter content in the surface horizon is about 2 percent. Nonirrigated land capability classification is 2w. This soil does not meet hydric criteria.

Map unit: CdB2 - Cataula sandy loam, 2 to 6 percent slopes, eroded

Component: Cataula (100%)

The Cataula component makes up 100 percent of the map unit. Slopes are 2 to 6 percent. This component is on interfluves on piedmonts. The parent material consists of clayey residuum weathered from granite, gneiss, and schist. Depth to a root restrictive layer, fragipan, is 15 to 40 inches. The natural drainage class is moderately well drained. Water movement in the most restrictive layer is moderately high. Available water to a depth of 60 inches is low. Shrink-swell potential is low. This soil is not flooded. It is not ponded. A seasonal zone of water saturation is at 37 inches during January, February, March, April, December. Organic matter content in the surface horizon is about 1 percent. Nonirrigated land capability classification is 3e. This soil does not meet hydric criteria.

Map unit: CeB2 - Cataula sandy clay loam, 2 to 6 percent slopes, eroded

Component: Cataula (100%)

The Cataula component makes up 100 percent of the map unit. Slopes are 2 to 6 percent. This component is on interfluves on piedmonts. The parent material consists of clayey residuum weathered from granite, gneiss, and schist. Depth to a root restrictive layer, fragipan, is 15 to 40 inches. The natural drainage class is moderately well drained. Water movement in the most restrictive layer is moderately high. Available water to a depth of 60 inches is low. Shrink-swell potential is low. This soil is not flooded. It is not ponded. A seasonal zone of water saturation is at 37 inches during January, February, March, April, December. Organic matter content in the surface horizon is about 1 percent. Nonirrigated land capability classification is 4e. This soil does not meet hydric criteria.

Laurens County, South Carolina

[Minor map unit components are excluded from this report]

Map unit: CeC2 - Cataula sandy clay loam, 6 to 10 percent slopes, eroded

Component: Cataula (100%)

The Cataula component makes up 100 percent of the map unit. Slopes are 6 to 10 percent. This component is on interfluves on piedmonts. The parent material consists of clayey residuum weathered from granite, gneiss, and schist. Depth to a root restrictive layer, fragipan, is 15 to 40 inches. The natural drainage class is moderately well drained. Water movement in the most restrictive layer is moderately high. Available water to a depth of 60 inches is low. Shrink-swell potential is low. This soil is not flooded. It is not ponded. A seasonal zone of water saturation is at 37 inches during January, February, March, April, December. Organic matter content in the surface horizon is about 1 percent. Nonirrigated land capability classification is 6e. This soil does not meet hydric criteria.

Map unit: EnB - Enon sandy loam, 2 to 6 percent slopes

Component: Enon (100%)

The Enon component makes up 100 percent of the map unit. Slopes are 2 to 6 percent. This component is on interfluves on piedmonts. The parent material consists of clayey residuum weathered from hornblende, diorite, or gabbro. Depth to a root restrictive layer is greater than 60 inches. The natural drainage class is well drained. Water movement in the most restrictive layer is moderately low. Available water to a depth of 60 inches is moderate. Shrink-swell potential is high. This soil is not flooded. It is not ponded. There is no zone of water saturation within a depth of 72 inches. Organic matter content in the surface horizon is about 1 percent. Nonirrigated land capability classification is 3e. This soil does not meet hydric criteria.

Map unit: EnC - Enon sandy loam, 6 to 10 percent slopes

Component: Enon (100%)

The Enon component makes up 100 percent of the map unit. Slopes are 6 to 10 percent. This component is on interfluves on piedmonts. The parent material consists of clayey residuum weathered from hornblende, diorite, or gabbro. Depth to a root restrictive layer is greater than 60 inches. The natural drainage class is well drained. Water movement in the most restrictive layer is moderately low. Available water to a depth of 60 inches is moderate. Shrink-swell potential is high. This soil is not flooded. It is not ponded. There is no zone of water saturation within a depth of 72 inches. Organic matter content in the surface horizon is about 1 percent. Nonirrigated land capability classification is 4e. This soil does not meet hydric criteria.

Map unit: PaD2 - Pacolet sandy clay loam, 10 to 15 percent slopes, eroded

Component: Pacolet (100%)

The Pacolet component makes up 100 percent of the map unit. Slopes are 10 to 15 percent. This component is on interfluves on piedmonts. The parent material consists of clayey residuum weathered from granite, gneiss, and schist. Depth to a root restrictive layer is greater than 60 inches. The natural drainage class is well drained. Water movement in the most restrictive layer is moderately high. Available water to a depth of 60 inches is moderate. Shrink-swell potential is low. This soil is not flooded. It is not ponded. There is no zone of water saturation within a depth of 72 inches. Organic matter content in the surface horizon is about 1 percent. Nonirrigated land capability classification is 6e. This soil does not meet hydric criteria.

Map Unit Description (Brief, Generated)

Laurens County, South Carolina

Map unit: W - Water

Component: Water (100%)

Generated brief soil descriptions are created for major soil components. The Water is a miscellaneous area.

Map unit: WkD - Wilkes sandy loam, 6 to 15 percent slopes

Component: Wilkes (100%)

The Wilkes component makes up 100 percent of the map unit. Slopes are 6 to 15 percent. This component is on interfluves on piedmonts. The parent material consists of loamy residuum weathered from hornblende, diorite, or gabbro. Depth to a root restrictive layer, bedrock, paralithic, is 10 to 20 inches. The natural drainage class is well drained. Water movement in the most restrictive layer is moderately high. Available water to a depth of 60 inches is very low. Shrink-swell potential is moderate. This soil is not flooded. It is not ponded. There is no zone of water saturation within a depth of 72 inches. Organic matter content in the surface horizon is about 1 percent. Nonirrigated land capability classification is 6e. This soil does not meet hydric criteria.