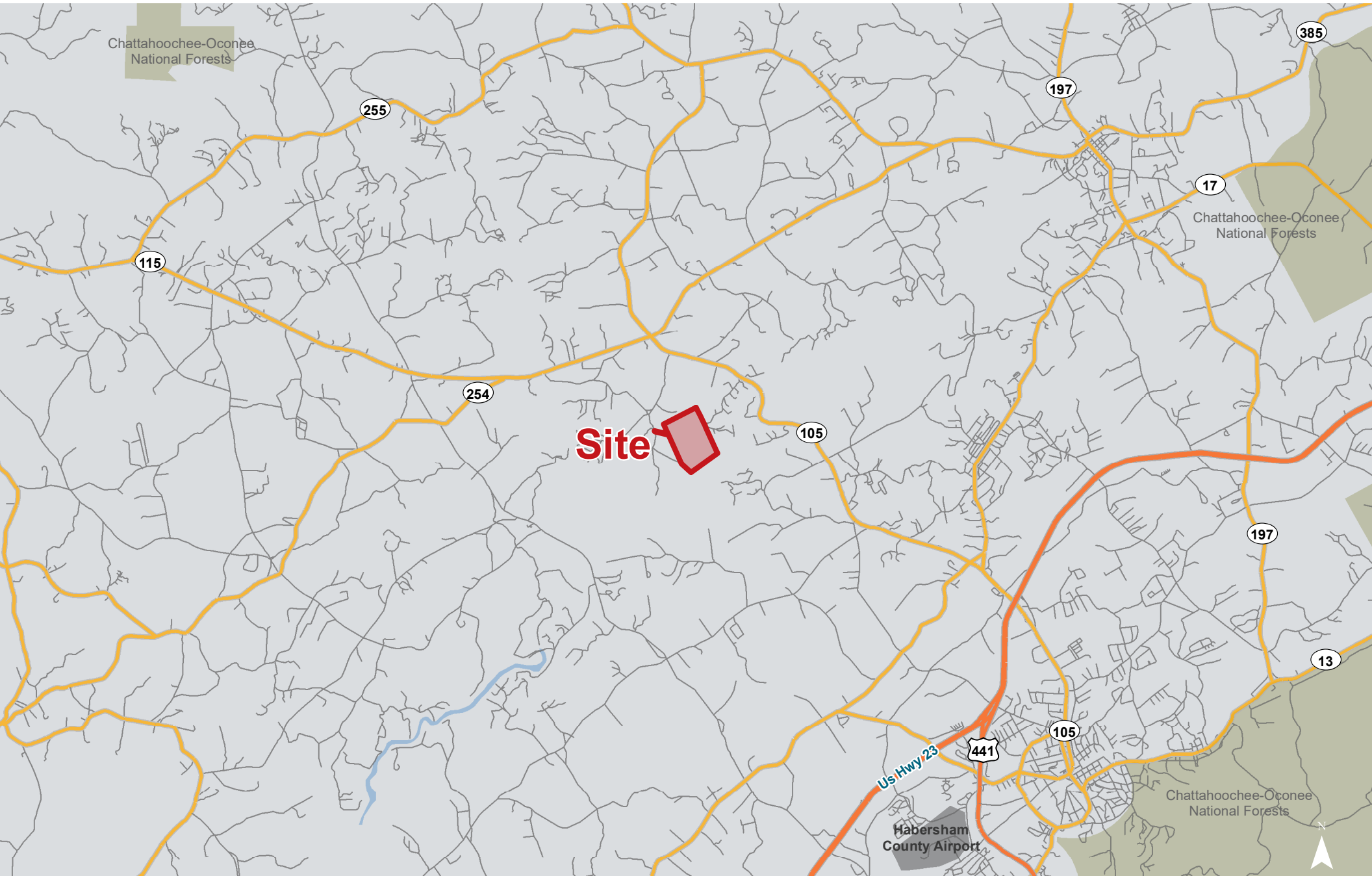
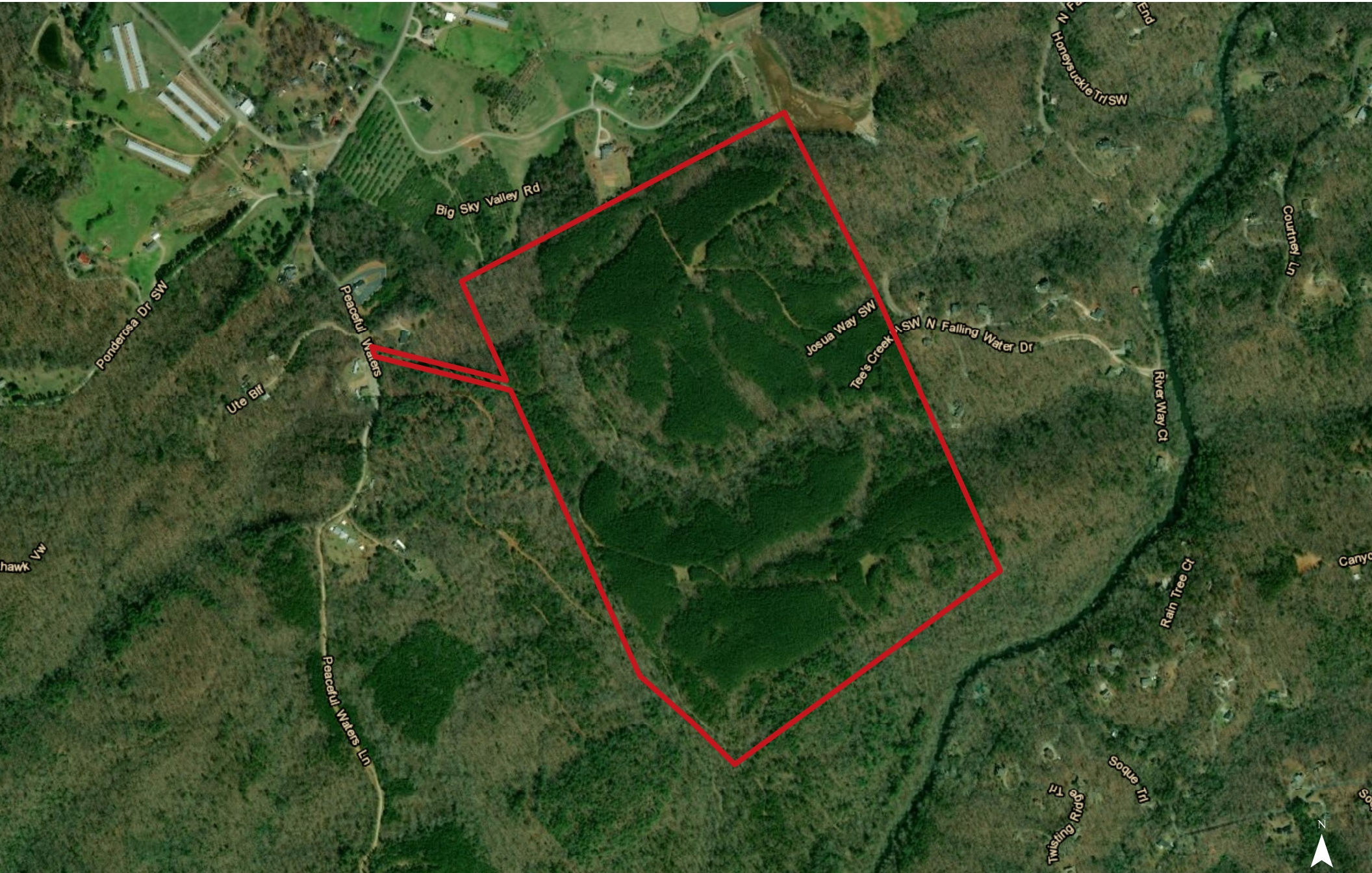


# Location



Map Updated: Wednesday, March 13, 2019. This information submitted is not guaranteed. Although obtained from reliable sources, all information should be confirmed prior to use or reliance upon the information. This document may not be reproduced in whole or in part without the express written consent of NAI Avant.





Map Updated: Wednesday, March 13, 2019. This information submitted is not guaranteed. Although obtained from reliable sources, all information should be confirmed prior to use or reliance upon the information. This document may not be reproduced in whole or in part without the express written consent of NAI Avant.



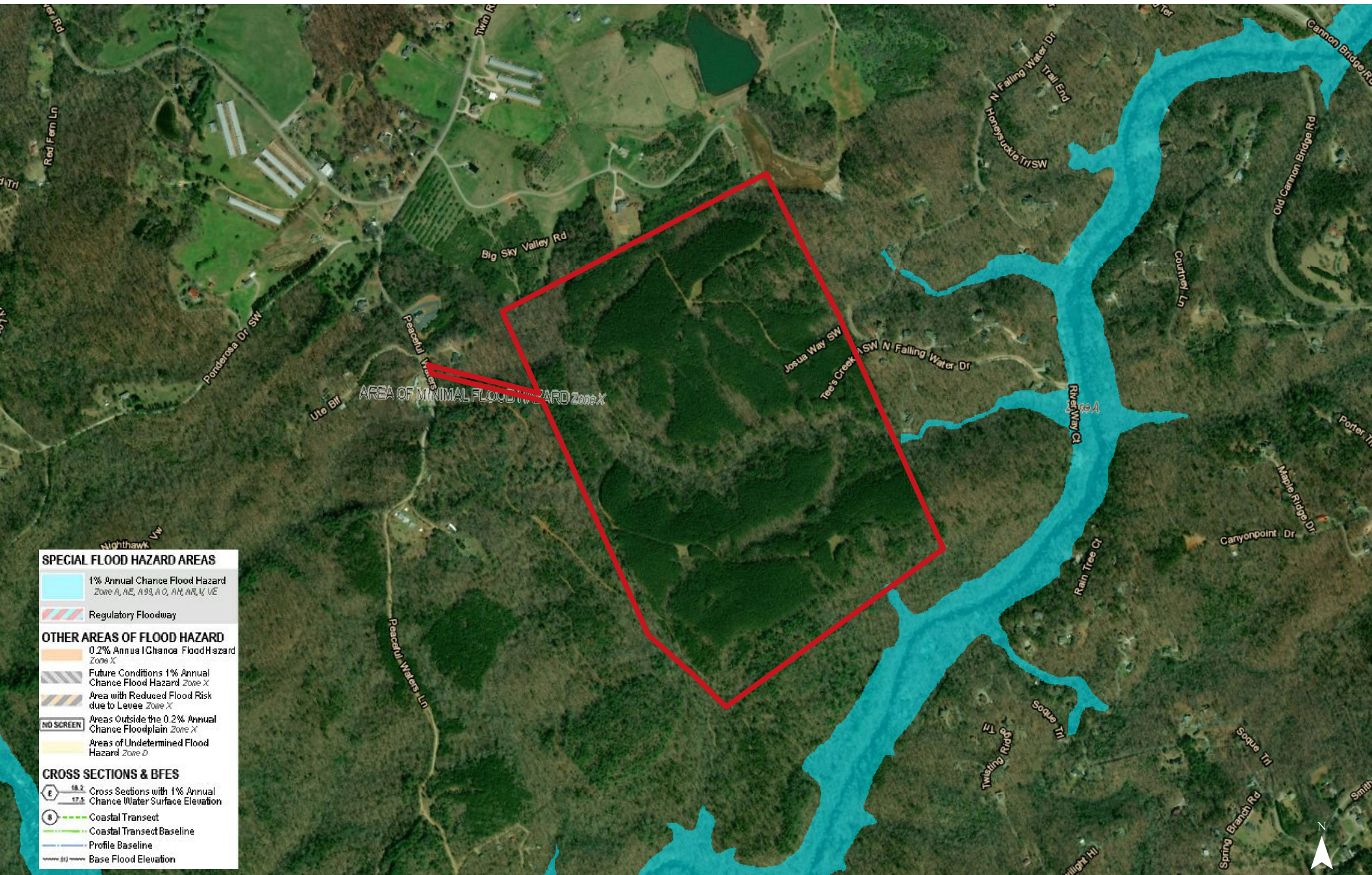
# Topographical Map



Map Updated: Wednesday, March 13, 2019. This information submitted is not guaranteed. Although obtained from reliable sources, all information should be confirmed prior to use or reliance upon the information. This document may not be reproduced in whole or in part without the express written consent of NAI Avant.



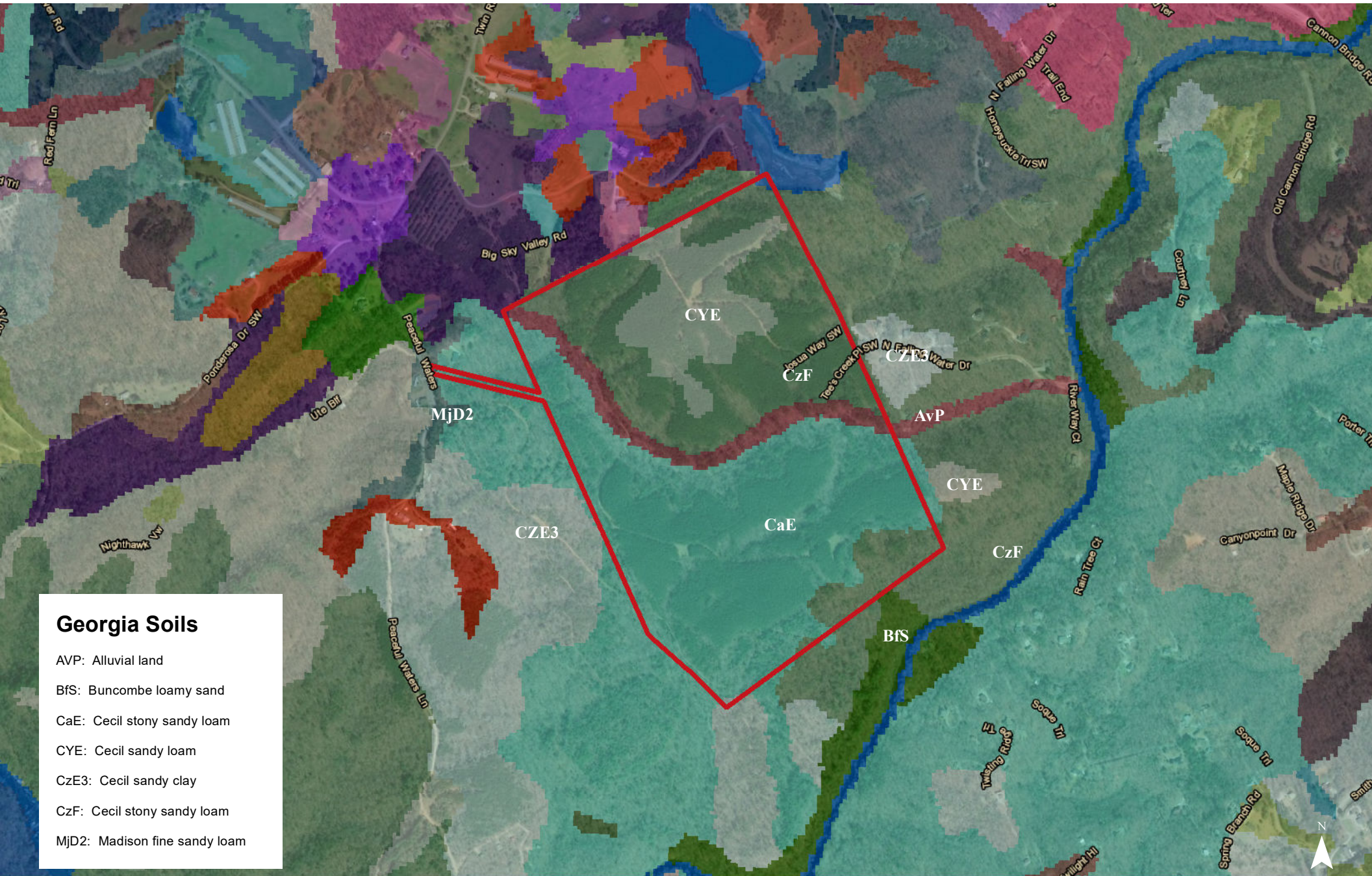
# FEMA National Flood Hazard Layer



Map Updated: Wednesday, March 13, 2019. This information submitted is not guaranteed. Although obtained from reliable sources, all information should be confirmed prior to use or reliance upon the information. This document may not be reproduced in whole or in part without the express written consent of NAI Avant.



# Soil Survey



## Georgia Soils

- AVP: Alluvial land
- BfS: Buncombe loamy sand
- CaE: Cecil stony sandy loam
- CYE: Cecil sandy loam
- CZE3: Cecil sandy clay
- CzF: Cecil stony sandy loam
- MjD2: Madison fine sandy loam

Map Updated: Wednesday, March 13, 2019. This information submitted is not guaranteed. Although obtained from reliable sources, all information should be confirmed prior to use or reliance upon the information. This document may not be reproduced in whole or in part without the express written consent of NAI Avant.