

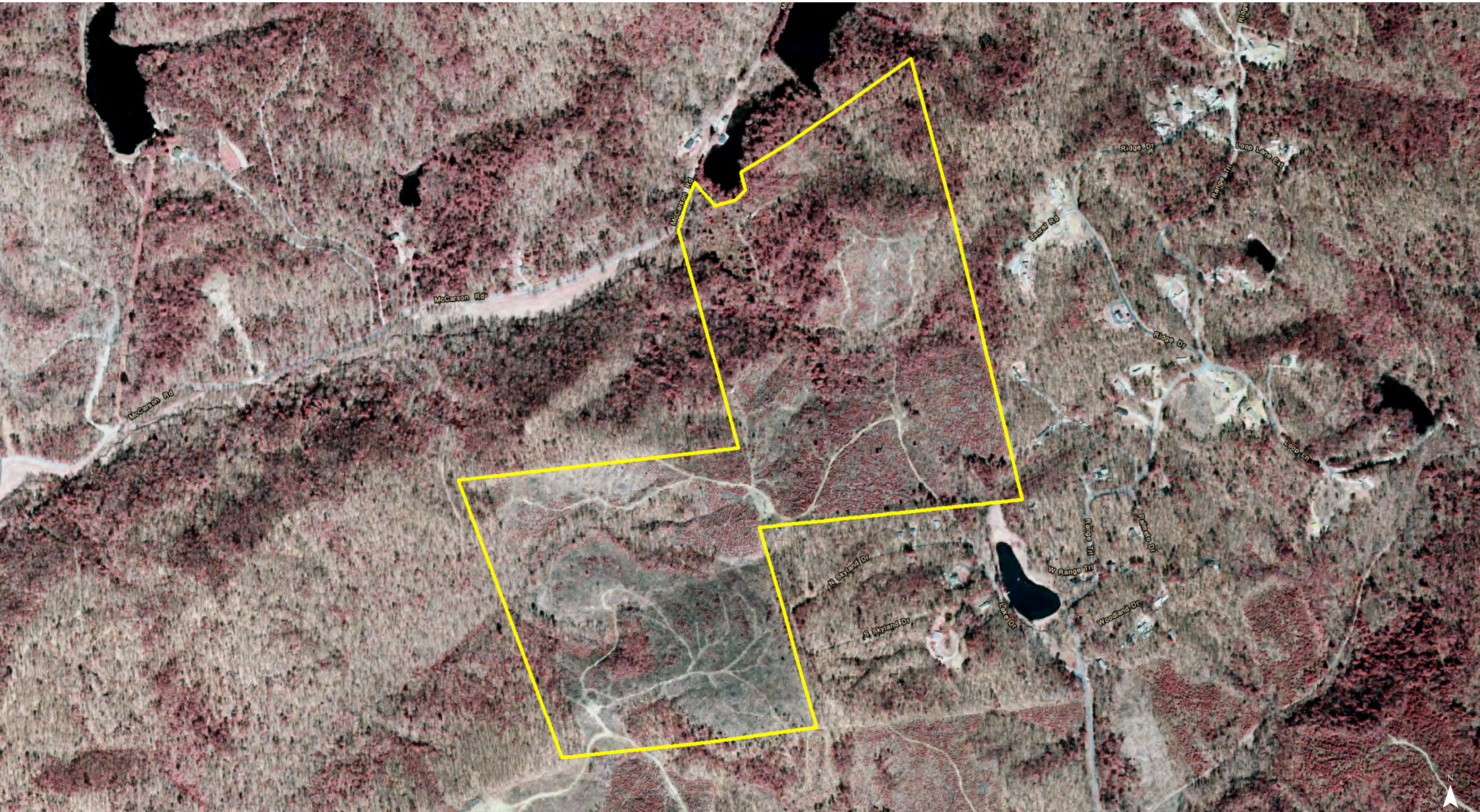


Map Updated: Monday, August 29, 2022. This information submitted is not guaranteed. Although obtained from reliable sources, all information should be confirmed prior to use or reliance upon the information. This document may not be reproduced in whole or in part without the express written consent of NAI Avant.

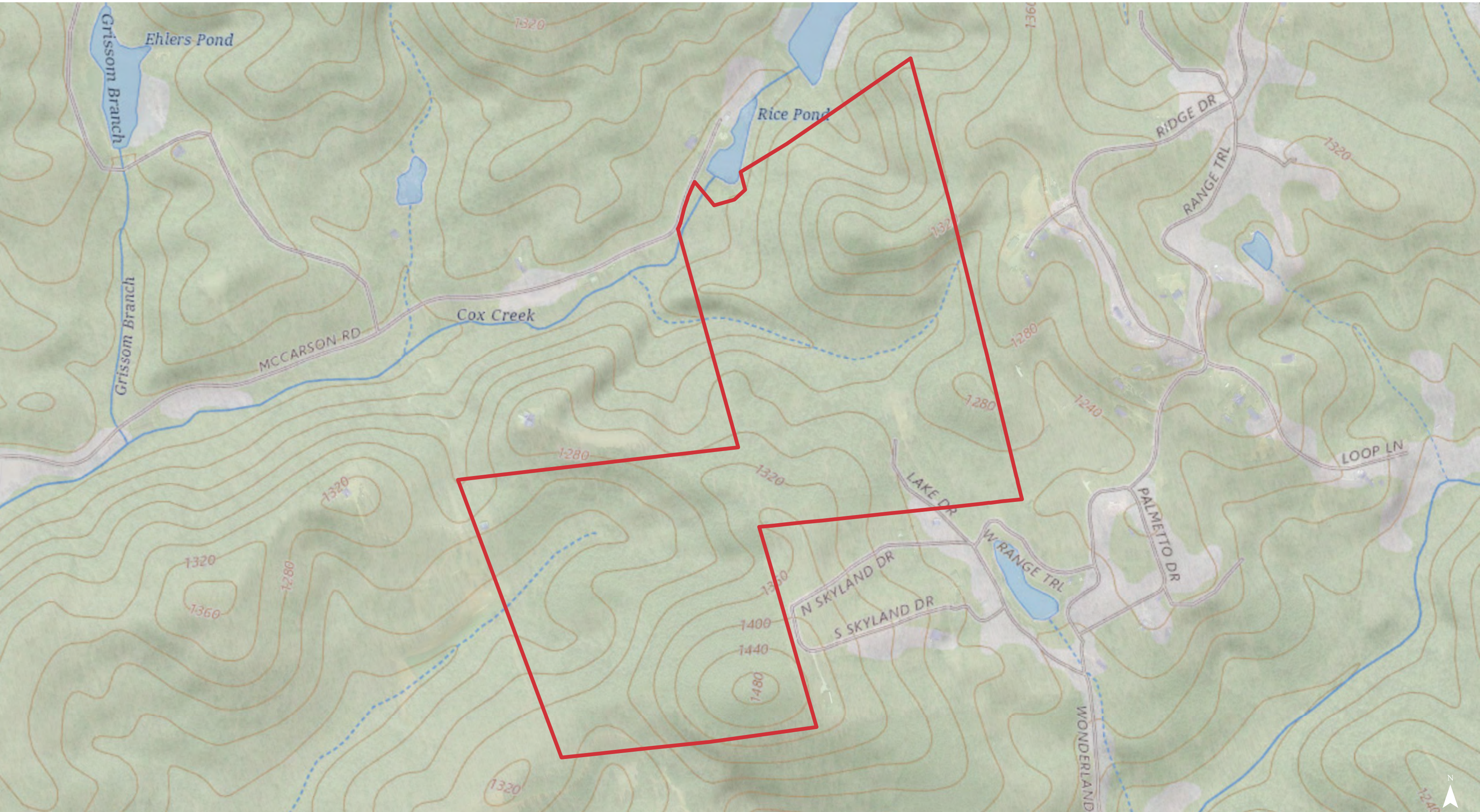


Map Updated: Monday, August 29, 2022. This information submitted is not guaranteed. Although obtained from reliable sources, all information should be confirmed prior to use or reliance upon the information. This document may not be reproduced in whole or in part without the express written consent of NAI Avant.





Map Updated: Monday, August 29, 2022. This information submitted is not guaranteed. Although obtained from reliable sources, all information should be confirmed prior to use or reliance upon the information. This document may not be reproduced in whole or in part without the express written consent of NAI Avant.



Map Updated: Monday, August 29, 2022. This information submitted is not guaranteed. Although obtained from reliable sources, all information should be confirmed prior to use or reliance upon the information. This document may not be reproduced in whole or in part without the express written consent of NAI Avant.

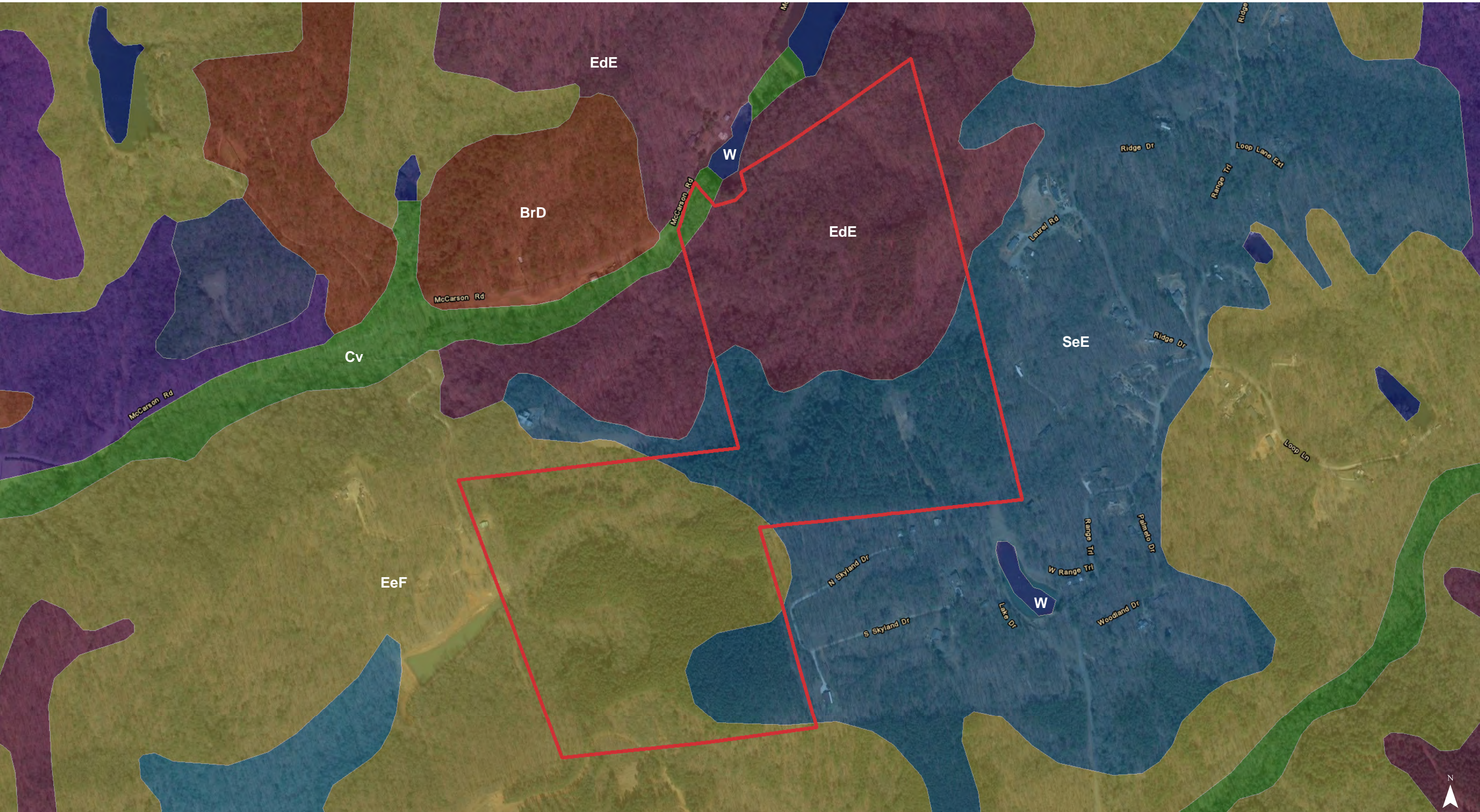




Map Updated: Monday, August 29, 2022. This information submitted is not guaranteed. Although obtained from reliable sources, all information should be confirmed prior to use or reliance upon the information. This document may not be reproduced in whole or in part without the express written consent of NAI Avant.



Map Updated: Monday, August 29, 2022. This information submitted is not guaranteed. Although obtained from reliable sources, all information should be confirmed prior to use or reliance upon the information. This document may not be reproduced in whole or in part without the express written consent of NAI Avant.



Map Updated: Monday, August 29, 2022. This information submitted is not guaranteed. Although obtained from reliable sources, all information should be confirmed prior to use or reliance upon the information. This document may not be reproduced in whole or in part without the express written consent of NAI Avant.

## Map Unit Description (Brief, Generated)

Greenville County, South Carolina

[Minor map unit components are excluded from this report]

**Map unit:** BrD - Brevard fine sandy loam, 10 to 15 percent slopes

**Component:** Brevard (100%)

*The Brevard component makes up 100 percent of the map unit. Slopes are 10 to 15 percent. This component is on mountain slopes on mountains. The parent material consists of loamy colluvium derived from granite, gneiss, or schist. Depth to a root restrictive layer is greater than 60 inches. The natural drainage class is well drained. Water movement in the most restrictive layer is moderately high. Available water to a depth of 60 inches is moderate. Shrink-swell potential is low. This soil is not flooded. It is not ponded. There is no zone of water saturation within a depth of 72 inches. Organic matter content in the surface horizon is about 2 percent. Nonirrigated land capability classification is 4e. This soil does not meet hydric criteria.*

**Map unit:** Cv - Chewacla soils

**Component:** Chewacla (100%)

*The Chewacla component makes up 100 percent of the map unit. Slopes are 0 to 2 percent. This component is on flood plains on piedmonts. The parent material consists of loamy alluvium. Depth to a root restrictive layer is greater than 60 inches. The natural drainage class is somewhat poorly drained. Water movement in the most restrictive layer is moderately high. Available water to a depth of 60 inches is moderate. Shrink-swell potential is low. This soil is occasionally flooded. It is not ponded. A seasonal zone of water saturation is at 19 inches during January, February, March. Organic matter content in the surface horizon is about 2 percent. Nonirrigated land capability classification is 3w. This soil does not meet hydric criteria.*

**Map unit:** EdE - Edneyville fine sandy loam, 15 to 25 percent slopes

**Component:** Edneytown (100%)

*The Edneytown component makes up 100 percent of the map unit. Slopes are 15 to 25 percent. This component is on mountain slopes on mountains. The parent material consists of loamy residuum weathered from granite and gneiss. Depth to a root restrictive layer is greater than 60 inches. The natural drainage class is well drained. Water movement in the most restrictive layer is moderately high. Available water to a depth of 60 inches is low. Shrink-swell potential is low. This soil is not flooded. It is not ponded. There is no zone of water saturation within a depth of 72 inches. Organic matter content in the surface horizon is about 2 percent. Nonirrigated land capability classification is 6e. This soil does not meet hydric criteria.*

**Map unit:** EeF - Edneyville soils, 25 to 40 percent slopes

**Component:** Edneytown (100%)

*The Edneytown component makes up 100 percent of the map unit. Slopes are 25 to 40 percent. This component is on mountain slopes on mountains. The parent material consists of loamy residuum weathered from granite and gneiss. Depth to a root restrictive layer is greater than 60 inches. The natural drainage class is well drained. Water movement in the most restrictive layer is moderately high. Available water to a depth of 60 inches is low. Shrink-swell potential is low. This soil is not flooded. It is not ponded. There is no zone of water saturation within a depth of 72 inches. Organic matter content in the surface horizon is about 2 percent. Nonirrigated land capability classification is 7e. This soil does not meet hydric criteria.*

Greenville County, South Carolina

[Minor map unit components are excluded from this report]

**Map unit:** SeF - Saluda and Edneyville soils, 25 to 40 percent slopes

**Component:** Saluda (60%)

*The Saluda component makes up 60 percent of the map unit. Slopes are 25 to 40 percent. This component is on mountain slopes on mountains. The parent material consists of loamy residuum weathered from granite and gneiss. Depth to a root restrictive layer, bedrock, paralithic, is 10 to 20 inches. The natural drainage class is well drained. Water movement in the most restrictive layer is moderately high. Available water to a depth of 60 inches is very low. Shrink-swell potential is low. This soil is not flooded. It is not ponded. There is no zone of water saturation within a depth of 72 inches. Organic matter content in the surface horizon is about 1 percent. Nonirrigated land capability classification is 7e. This soil does not meet hydric criteria.*

**Component:** Edneytown (40%)

*The Edneytown component makes up 40 percent of the map unit. Slopes are 25 to 40 percent. This component is on mountain slopes on mountains. The parent material consists of loamy residuum weathered from granite and gneiss. Depth to a root restrictive layer is greater than 60 inches. The natural drainage class is well drained. Water movement in the most restrictive layer is moderately high. Available water to a depth of 60 inches is low. Shrink-swell potential is low. This soil is not flooded. It is not ponded. There is no zone of water saturation within a depth of 72 inches. Organic matter content in the surface horizon is about 2 percent. Nonirrigated land capability classification is 7e. This soil does not meet hydric criteria.*

**Map unit:** W - Water

**Component:** Water (100%)

*Generated brief soil descriptions are created for major soil components. The Water is a miscellaneous area.*