

±196 Acres - Oak Hill Creek Tract

11270 McCullough School Road Honea Path, SC 29654

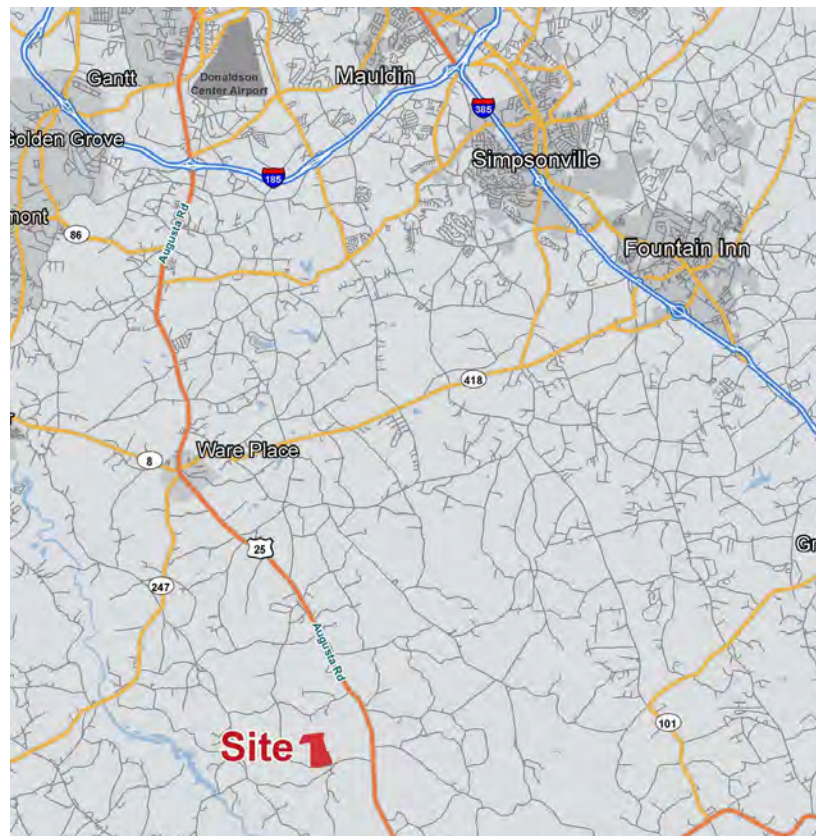


\$1,156,400



Land Features

- Greenville County TM #: 0590020100300 (a portion of)
- Asking Price: \$5,900/acre
- ±100 acres of mature hardwoods including upland and bottom areas
- ±75 acres of 25-30 year old managed loblolly
- ±2.5 acre pond
- Two small fields
- ±1.5 miles of creek frontage
- ±2,500 feet of frontage on Oak Hill Road
- Excellent deer and turkey habitat
- ±40 minute drive from downtown Greenville
- Additional acreage is available



No Warranty Or Representation, Express Or Implied, Is Made As To The Accuracy Of The Information Contained Herein, And The Same Is Submitted Subject To Errors, Omissions, Change Of Price, Rental Or Other Conditions, Prior Sale, Lease Or Financing, Or Withdrawal Without Notice, And Of Any Special Listing Conditions Imposed By Our Principals No Warranties Or Representations Are Made As To The Condition Of The Property Or Any Hazards Contained Therein Are Any To Be Implied.



101 E Washington St
Greenville, SC 29601
naiearlefurman.com

Property Description

11270 McCullough School Road Honea Path, SC 29654



Property Overview

This property checks all the boxes for the hunting and outdoor enthusiast. A nice blend of mature hardwood creek bottoms and ridges is complemented by large, healthy stands of twice thinned 34 year old loblolly pines. A +-2.5 acre pond is located in the center of the property and includes a series of small beaver ponds on the upper end. Also near the center of the property is a +-10 acre section of ten year old clear-cut regrowth that could be converted into a dove field. This part of southern Greenville County has produced record book whitetails in recent years and turkey numbers are still holding strong as well and the Oak Hill Creek Tract is no exception.

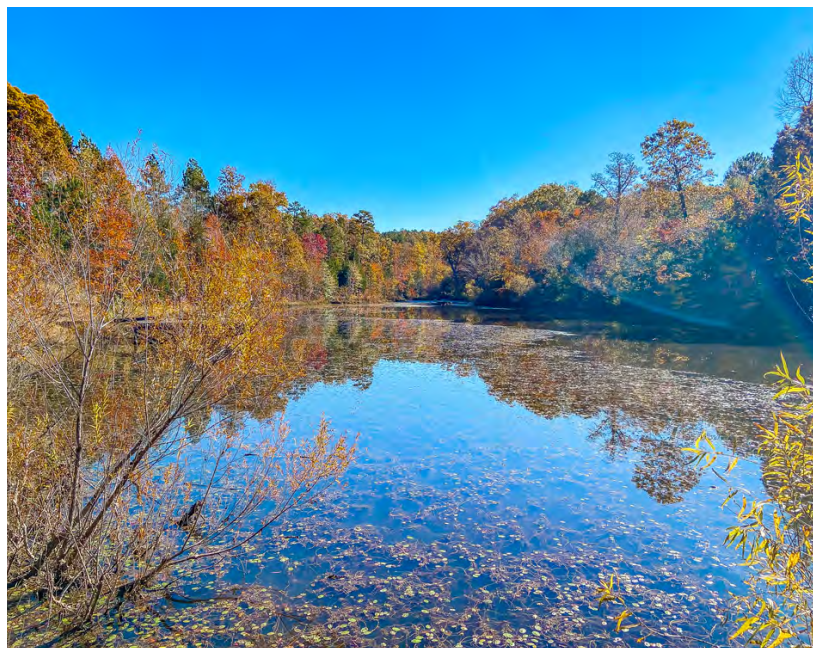
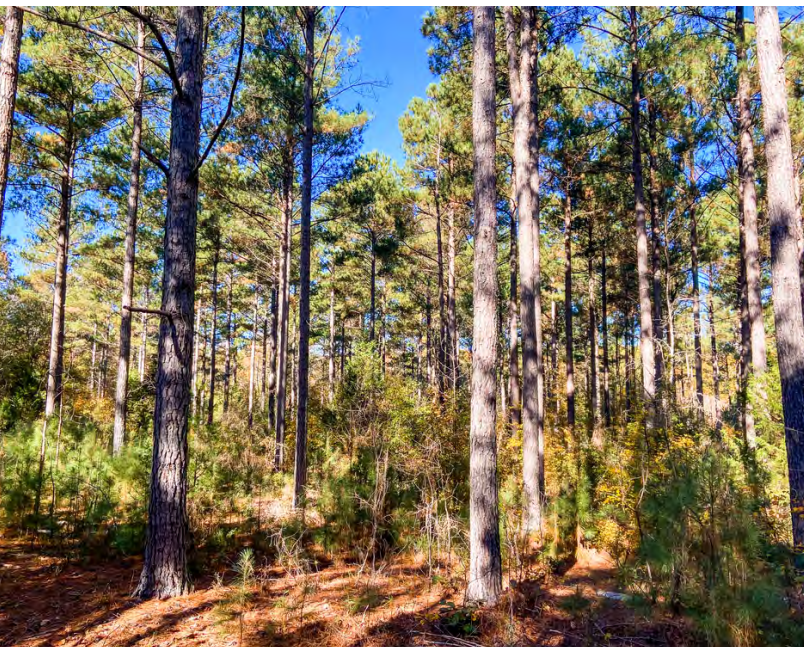
✉ Rusty Hamrick
+1 864 232 9040
rhamrick@naiearlefurman.com

No Warranty Or Representation, Express Or Implied, Is Made As To The Accuracy Of The Information Contained Herein, And The Same Is Submitted Subject To Errors, Omissions, Change Of Price, Rental Or Other Conditions, Prior Sale, Lease Or Financing, Or Withdrawal Without Notice, And Of Any Special Listing Conditions Imposed By Our Principals No Warranties Or Representations Are Made As To The Condition Of The Property Or Any Hazards Contained Therein Are Any To Be Implied.



Property Photos

11270 McCullough School Road Honea Path, SC 29654



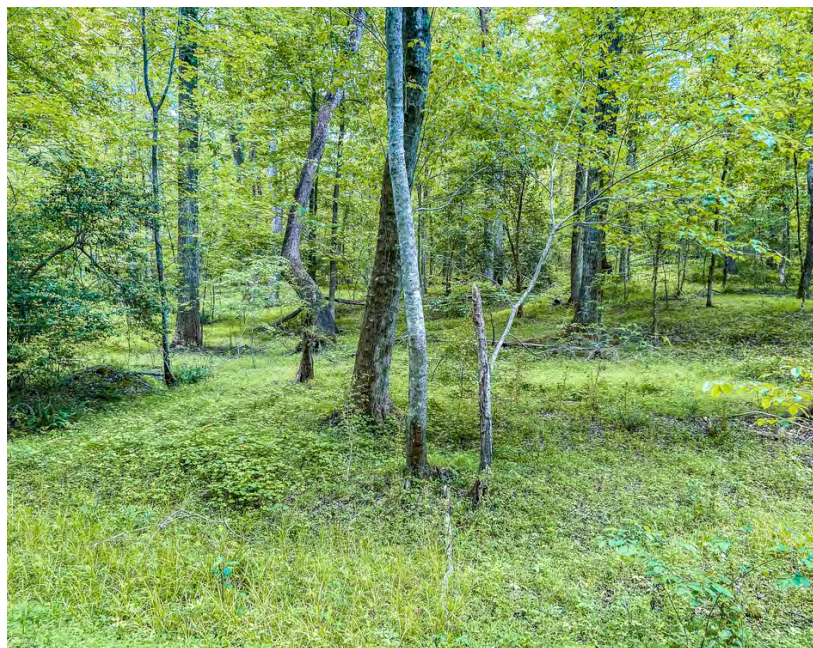
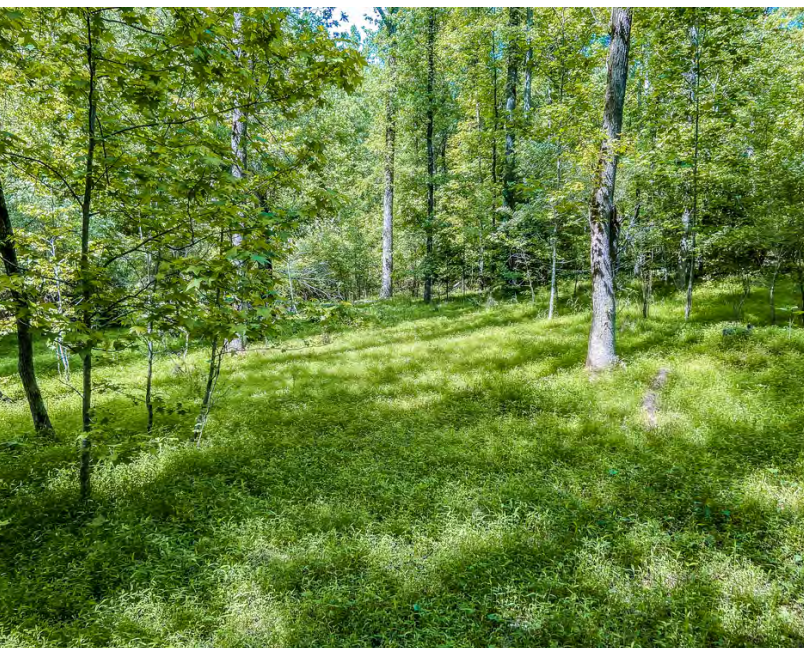
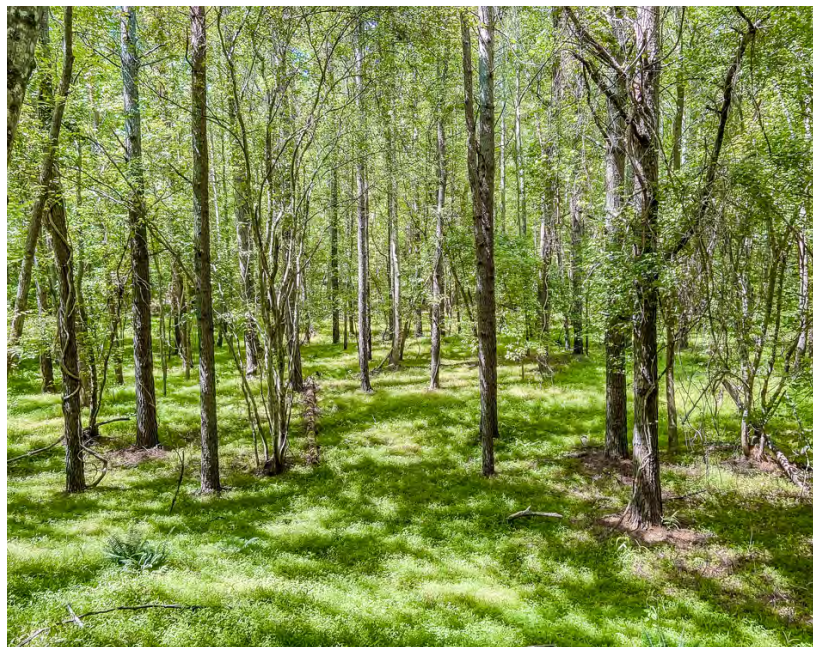
✉ Rusty Hamrick
+1 864 232 9040
rhamrick@naiearlefurman.com

No Warranty Or Representation, Express Or Implied, Is Made As To The Accuracy Of The Information Contained Herein, And The Same Is Submitted Subject To Errors, Omissions, Change Of Price, Rental Or Other Conditions, Prior Sale, Lease Or Financing, Or Withdrawal Without Notice, And Of Any Special Listing Conditions Imposed By Our Principals No Warranties Or Representations Are Made As To The Condition Of The Property Or Any Hazards Contained Therein Are Any To Be Implied.

📍 101 E Washington St
Greenville, SC 29601
naiearlefurman.com

Property Photos

11270 McCullough School Road Honea Path, SC 29654



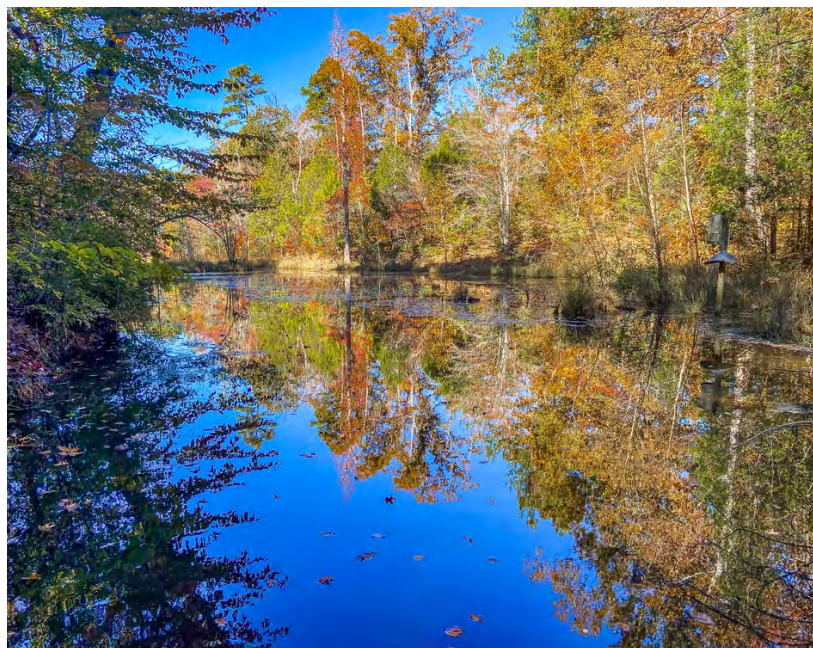
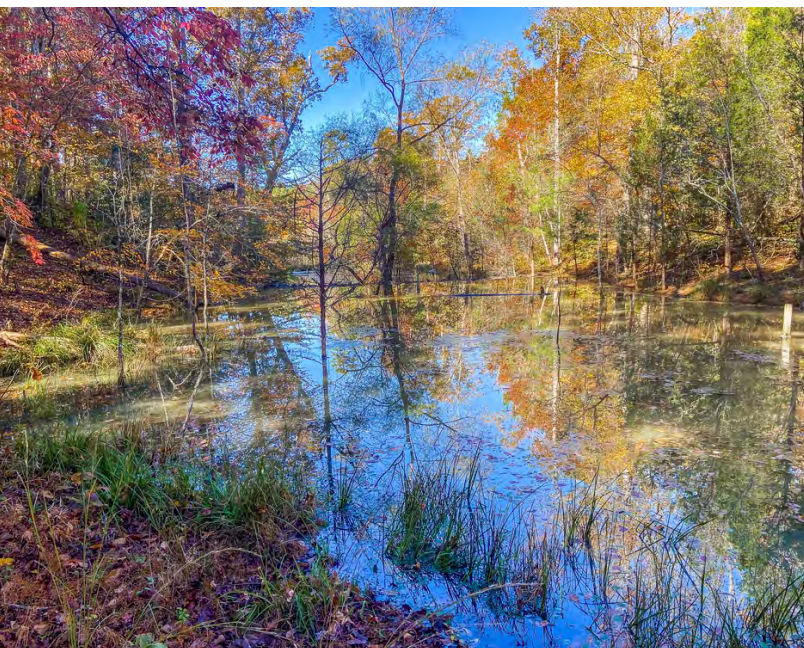
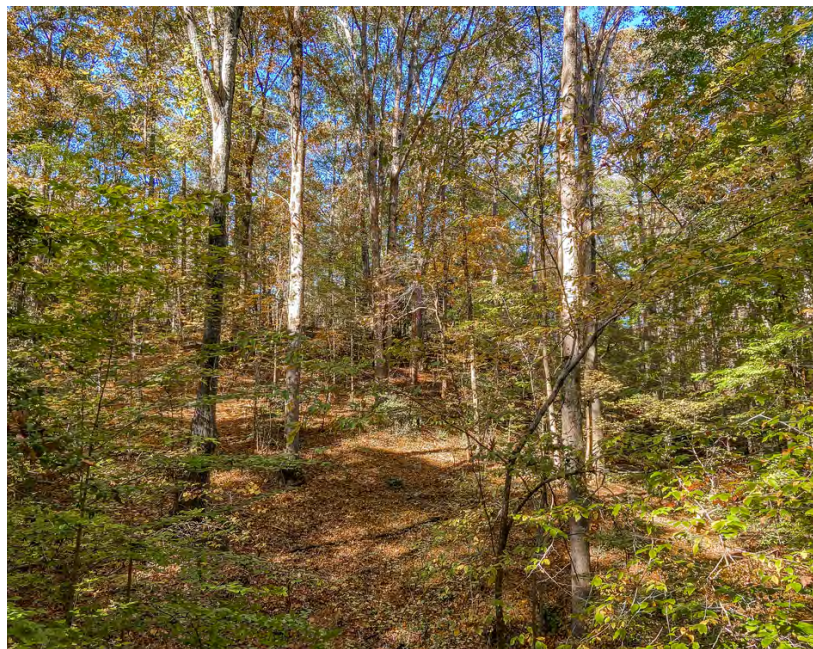
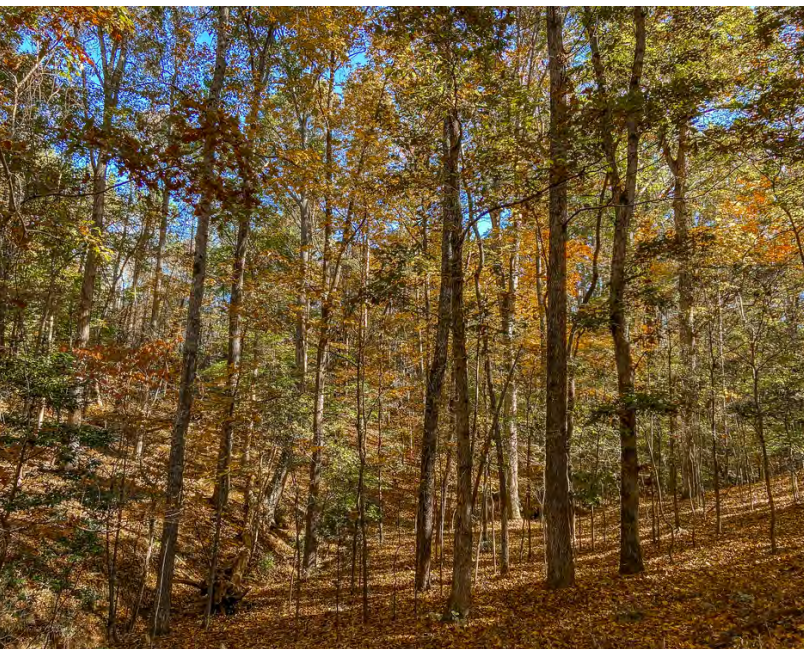
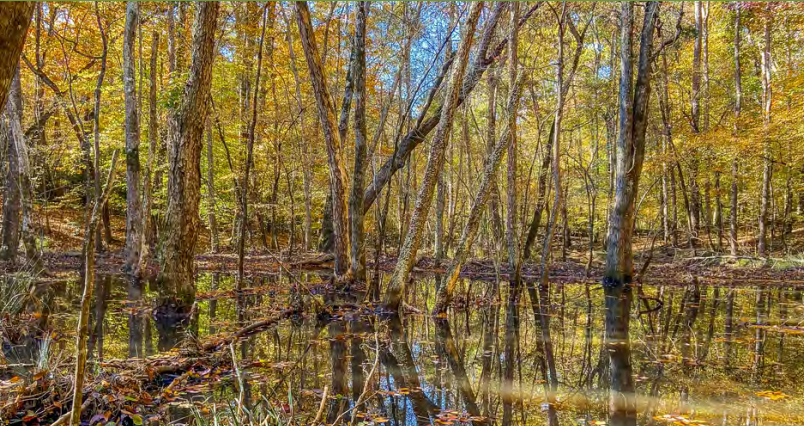
✉ Rusty Hamrick
+1 864 232 9040
rhamrick@naiearlefurman.com

No Warranty Or Representation, Express Or Implied, Is Made As To The Accuracy Of The Information Contained Herein, And The Same Is Submitted Subject To Errors, Omissions, Change Of Price, Rental Or Other Conditions, Prior Sale, Lease Or Financing, Or Withdrawal Without Notice, And Of Any Special Listing Conditions Imposed By Our Principals No Warranties Or Rep-resentations Are Made As To The Condition Of The Property Or Any Hazards Contained Therein Are Any To Be Implied.

📍 101 E Washington St
Greenville, SC 29601
naiearlefurman.com

Property Photos

11270 McCullough School Road Honea Path, SC 29654



✉ Rusty Hamrick
+1 864 232 9040
rhamrick@naiearlefurman.com

No Warranty Or Representation, Express Or Implied, Is Made As To The Accuracy Of The Information Contained Herein, And The Same Is Submitted Subject To Errors, Omissions, Change Of Price, Rental Or Other Conditions, Prior Sale, Lease Or Financing, Or Withdrawal Without Notice, And Of Any Special Listing Conditions Imposed By Our Principals No Warranties Or Representations Are Made As To The Condition Of The Property Or Any Hazards Contained Therein Are Any To Be Implied.

📍 101 E Washington St
Greenville, SC 29601
naiearlefurman.com

Map Set

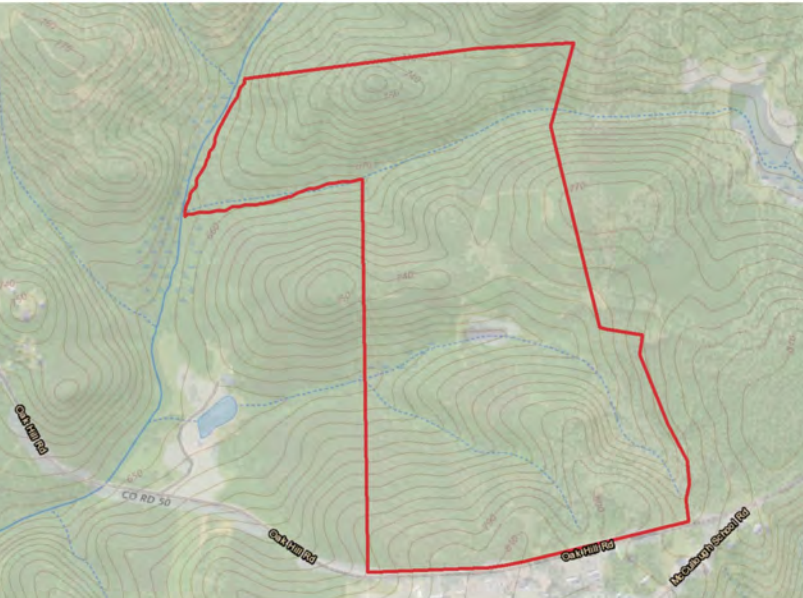
11270 McCullough School Road Honea Path, SC 29654



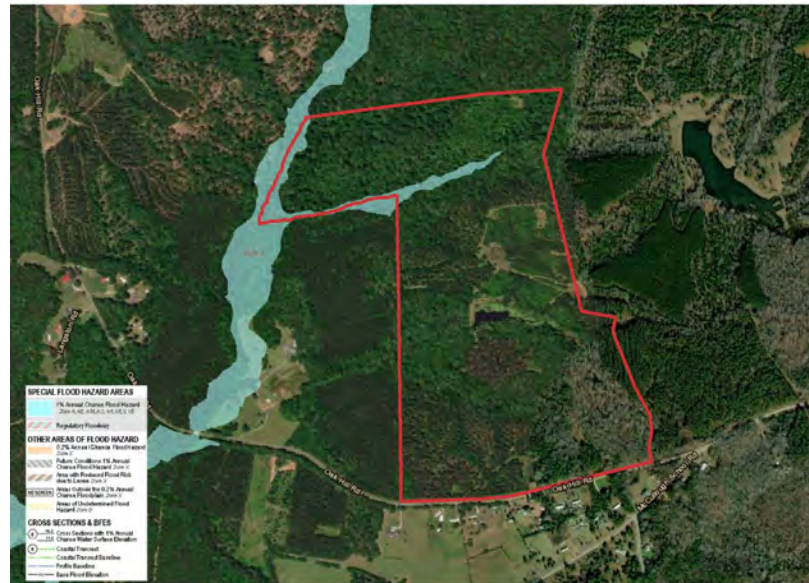
Topographical Map



FEMA Flood Zones



National Wetlands Inv.



Soil Survey

