

Bennett's Bridge Estate

± 5 Acres | Greer, SC



\$174,900



Bennetts Bridge Road Greer, SC

Land | ± 5 Acres

- Tax Map #: 5-40-00-008.08 Spartanburg County
- Ideal Property to build Dream Home with River Frontage
- Ample Road Frontage
- Mature Pines & Hardwoods for Private Residence
- Zoned for Award Winning District 5 Schools
- Minutes from Downtown Greer & Five Forks
- +/- 30 Minutes to Downtown Greenville
- +/- 35 Minutes to Downtown Spartanburg
- Located on Greenville/Spartanburg County Line
- Serviced by Laurens Electric Cooperative
- *Buyer &/or Buyer's Agent(s) to Verify All Info.



✉ Dallas Wright
+ 1 843 505 2644
dwright@NAlearlfurman.com

✉ Ellice Niedrach
+1 864 680 7916
eniedrach@nalearlfurman.com

No Warranty Or Representation, Express Or Implied, Is Made As To The Accuracy Of The Information Contained Herein, And The Same Is Submitted Subject To Errors, Omissions, Change Of Price, Rental Or Other Conditions, Prior Sale, Lease Or Financing, Or Withdrawal Without Notice, And Of Any Special Listing Conditions Imposed By Our Principals No Warranties Or Representations Are Made As To The Condition Of The Property Or Any Hazards Contained Therein Are Any To Be Implied.

📍 101 E Washington St
Greenville, SC 29601
nalearlfurman.com

LAND FOR SALE

Greenville/Spartanburg County Line

LAND | ± 5 ACRES



Property Overview

Bennett's Bridge Estate is a stunning property filled with mature pines and hardwoods, awaiting a new owner to choose that picture-perfect spot to build their dream home with river frontage. This peaceful +/- 5-acre tract is perfectly located with the Enoree River flowing gracefully to the rear of the property and Vines Creek to the left of this extraordinary Estate. Just a short drive to the growing, affluent Five Forks and Greer, this remarkable land is located on the Greenville/Spartanburg County Line. Bennett's Bridge Estate provides the closeness of present-day essentials with a relaxed life in the countryside with a view.

Location Overview

I-385 S to I-85 N to SC-14; Exit 56; Westmoreland Road to Bennetts Bridge Road

East side of Bennetts Bridge Road, North of (Hwy 296) Reidville Road

✉ Dallas Wright
+1 843 505 2644
dwright@naiearlefurman.com

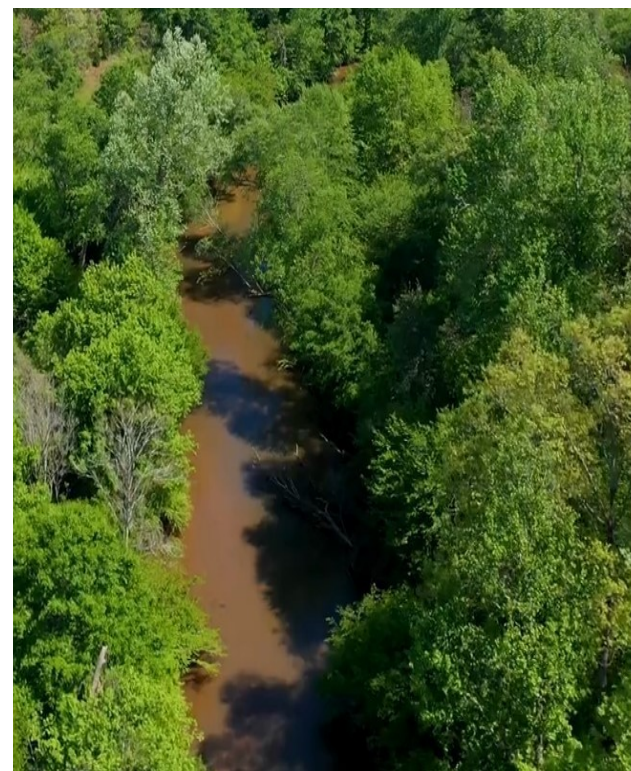
✉ Ellice Niedrach
+1 864 680 7916
eniedrach@naiearlefurman.com

No Warranty Or Representation, Express Or Implied, Is Made As To The Accuracy Of The Information Contained Herein, And The Same Is Submitted Subject To Errors, Omissions, Change Of Price, Rental Or Other Conditions, Prior Sale, Lease Or Financing Or Withdrawal Without Notice, And Of Any Special Listing Conditions Imposed By Our Principals No Warranties Or Representations Are Made As To The Condition Of The Property Or Any Hazards Contained Therein Are Any To Be Implied.



Bennett's Bridge Estate

Bennetts Bridge Road Greer, SC



Ellice Niedrach
+1 864 680 7916
eniedrach@naiearlefurman.com

No Warranty Or Representation, Express Or Implied, Is Made As To The Accuracy Of The Information Contained Herein, And The Same Is Submitted Subject To Errors, Omissions, Change Of Price, Rental Or Other Conditions, Prior Sale, Lease Or Financing, Or Withdrawal Without Notice, And Of Any Special Listing Conditions Imposed By Our Principals No Warranties Or Representations Are Made As To The Condition Of The Property Or Any Hazards Contained Therein Are Any To Be Implied.



101 E Washington St
Greenville, SC 29601
naiearlefurman.com

FOR SALE

Bennetts Bridge Road Greer, SC 29651



BENNETT'S BRIDGE ESTATE

+/- 5 ACRES ON BENNETTS BRIDGE ROAD | GREER, SC



✉ Dallas Wright
+1 864 680 7916
dwright@naiearlefurman.com

✉ Ellice Niedrach
+1 864 610 5263
eniedrach@naiearlefurman.com

No Warranty Or Representation, Express Or Implied, Is Made As To The Accuracy Of The Information Contained Herein, And The Same Is Submitted Subject To Errors, Omissions, Change Of Price, Rental Or Other Conditions, Prior Sale, Lease Or Financing, Or Withdrawal Without Notice, And Of Any Special Listing Conditions Imposed By Our Principals No Warranties Or Representations Are Made As To The Condition Of The Property Or Any Hazards Contained Therein Are Any To Be Implied.

📍 101 E Washington St
Greenville, SC 29601
naiearlefurman.com