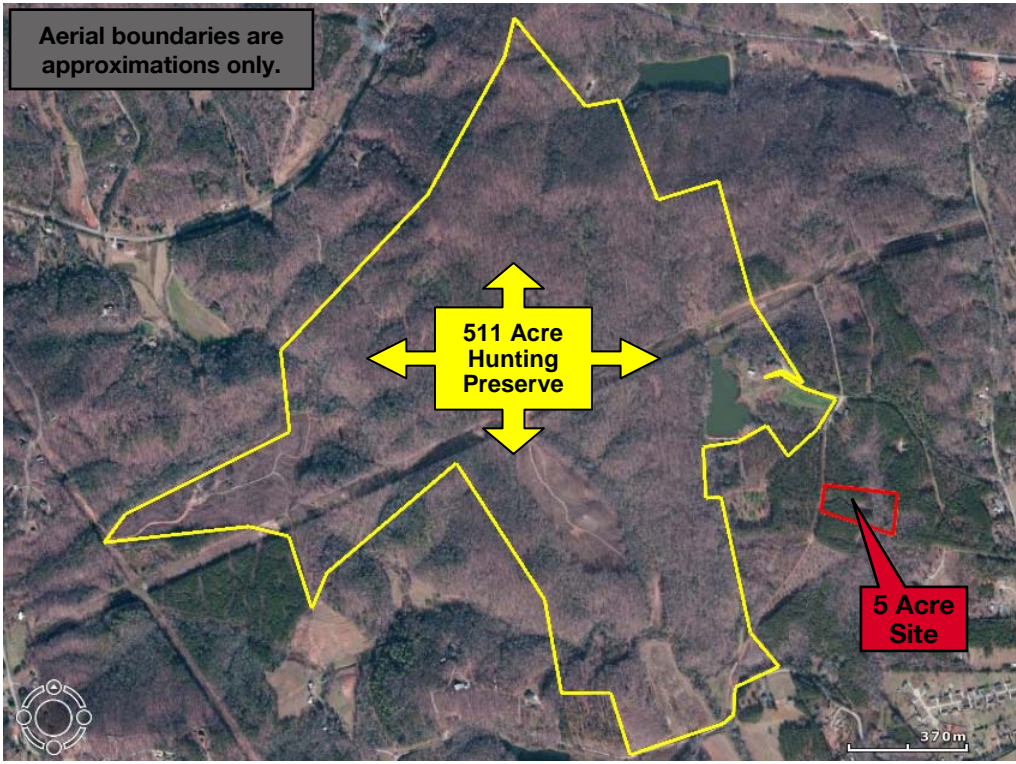


Aerial boundaries are approximations only.



### Property Details

- An approximately 5 acre lot
- Lot includes a 1/30th percent ownership in the 511 acre hunting preserve owned by the Burban Creek Homeowner's Association
- Excellent views of the surrounding Blue Ridge Mountains
- Greenville County Tax Map # 0651040101900
- Sale Price: \$84,900.00

This approximately 5 acre wooded homesite includes a 1/30th percent ownership in the 511 acre hunting preserve owned by the Burban Creek Homeowner's Association. Burban Creek is located 20 miles north of Greenville, SC and consists of beautiful rolling hills that create the headwaters of the Tyger River. Mature hardwoods make up the majority of the property along with several food plots and a utility line that stretches for approximately one mile through the middle of the tract. Burban Creek also includes a custom built cabin overlooking a 7 acre pond - both of which are included in the ownership stake and available for all Burban Creek owners to enjoy. An extensive interior road system provides easy access to the entire 511 acres and this road system connects with the two 5 acre lots. The lots offer incredible views of the surrounding Blue Ridge Mountains and provides the perfect secluded setting for a home site. Excellent recreational opportunities are also available to all Burban Creek owners including deer hunting, bass fishing, and the world class turkey hunting that this area of South Carolina is known for.

## Plantation Homesite ▪ Burban Creek 17 Big Jake Pass

Travelers Rest , South Carolina 29690



Shared Cabin on Hunting Preserve

This is an incredibly unique opportunity to enjoy 511 acres just a short 20 minute drive from downtown Greenville – all for the price of a 5 acre lot!! To find out more about Burban Creek visit the website at <http://burbancreekplantation.com>.



The information contained herein has been given to us by the owner of the property or other sources we deem reliable. We have no reason to doubt its accuracy, but we do not guarantee it. All information should be verified prior to purchase or lease.

Huff Creek Properties is a timber and recreational land division of **NAI Earle Furman, LLC**  
Commercial Real Estate Services, Worldwide.

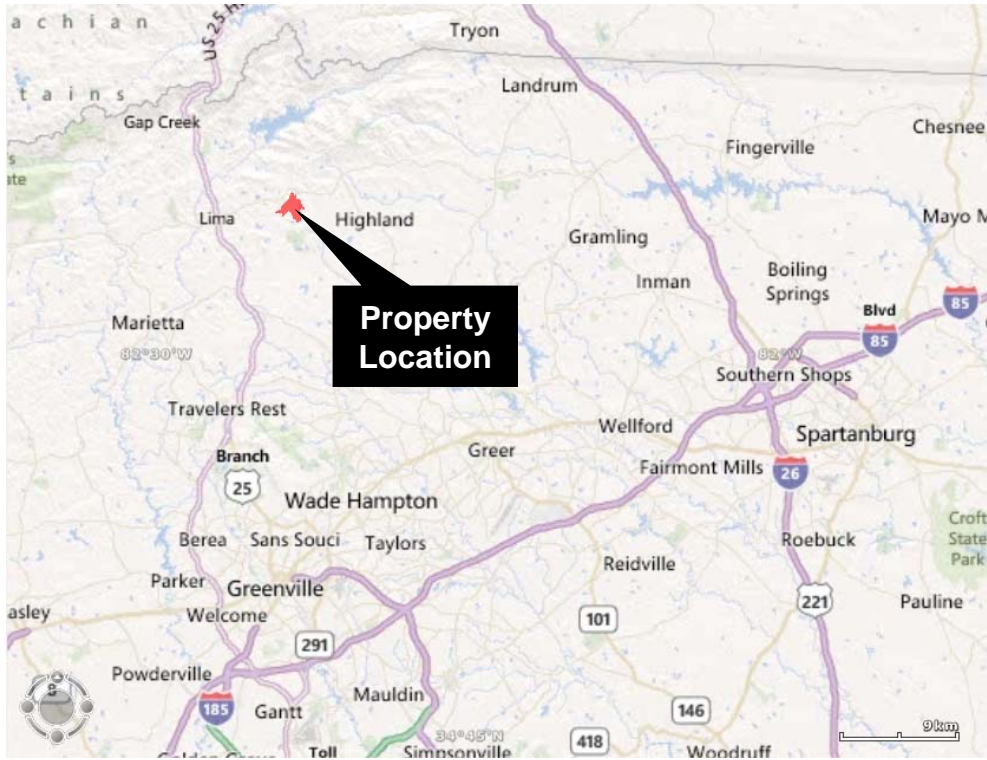
#### contact information

**Rusty Hamrick**  
101 E. Washington Street  
Suite 400  
Greenville, SC 29601  
[www.naiearlefurman.com](http://www.naiearlefurman.com)  
tel 864 232 9040  
fax 864 235 4300  
[rhamrick@naiearlefurman.com](mailto:rhamrick@naiearlefurman.com)

# Plantation Homesite ■ Burban Creek

## 17 Big Jake Pass

Travelers Rest , South Carolina 29690

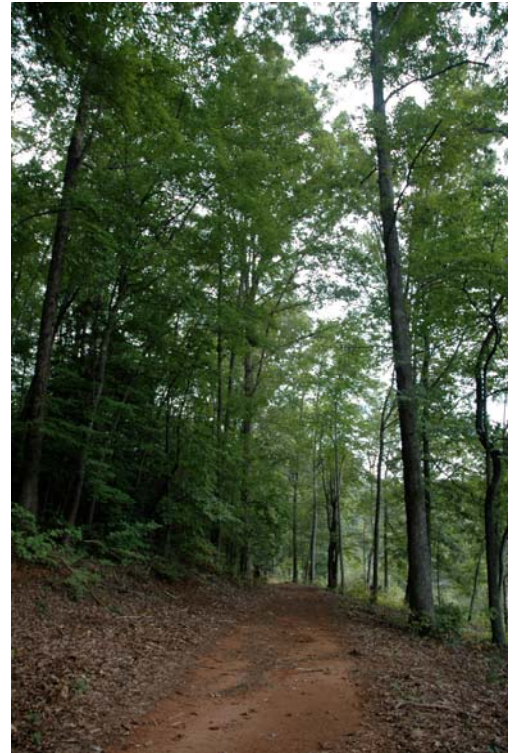


Huff Creek Properties is a timber and recreational land division of

**NAI Earle Furman, LLC**  
Commercial Real Estate Services, Worldwide.



**Plantation Homesite ■ Burban Creek**  
**17 Big Jake Pass**  
 Travelers Rest , South Carolina 29690



±5 Acre Tract  
 \$84,900.00  
 Call Agent for Further Detail



The information contained herein has been given to us by the owner of the property or other sources we deem reliable. We have no reason to doubt its accuracy, but we do not guarantee it. All information should be verified prior to purchase or lease.

**contact information**  
**Rusty Hamrick**  
 101 E. Washington Street  
 Suite 400  
 Greenville, SC 29601  
 www.naiearlefurman.com  
 tel 864 232 9040  
 fax 864 235 4300  
[rhamrick@naiearlefurman.com](mailto:rhamrick@naiearlefurman.com)