



PRICE REDUCED from \$1,750/Acre to \$1,500/Acre!

## Wamer Road

Bowman, SC 29018

### Property Features

- ±2,600' of road frontage on Wamer Road
- Approximately 3/4 of a mile of frontage on both sides of Cow Castle Creek which feeds a large swamp
- Approximately one hour from Charleston & Columbia and five miles east of Bowman, SC
- Excellent hunting opportunities
- A portion of Orangeburg County tax ID 0275-00-02-001.000
- Sale Price: \$1,500/acre

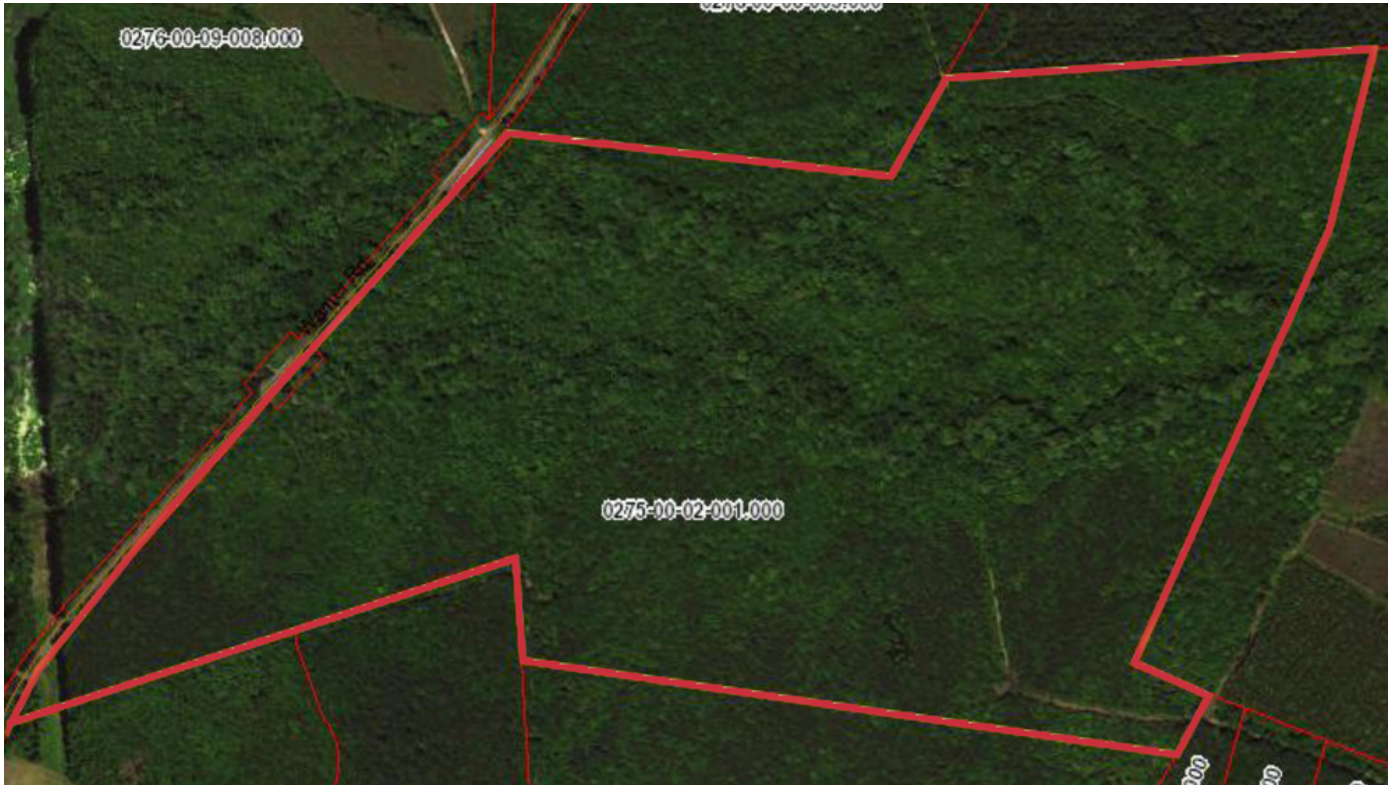


For more information:

**Rusty Hamrick**

864 232 9040 • [rhamrick@naiearlefurman.com](mailto:rhamrick@naiearlefurman.com)

# For Sale N. Highway 28



## Property Summary

Sale Price: \$1,500 / acre

Lot Size: 150.0 Acres

APN #: 0275-00-02-001.00  
(portion)

## Property Overview

Cow Castle Creek stretches for approximately 3/4 of a mile through the interior of the property and serves as an excellent water source that includes a swamp which provides duck hunting opportunities and a sanctuary for growing trophy whitetails. A quality interior trail system provides access throughout the majority of the property. The owners are selling 150 acres of the ±227 acres identified as Orangeburg County Tax Map ID 0275-00-02-001.000

## Location Overview

This property is located about ±55 miles from both Charleston & Columbia along Wamer Road approximately 5 miles east of the town of Bowman, SC.

For Sale  
150 Acres  
N. Highway 28



For Sale  
150 Acres  
N. Highway 28

