

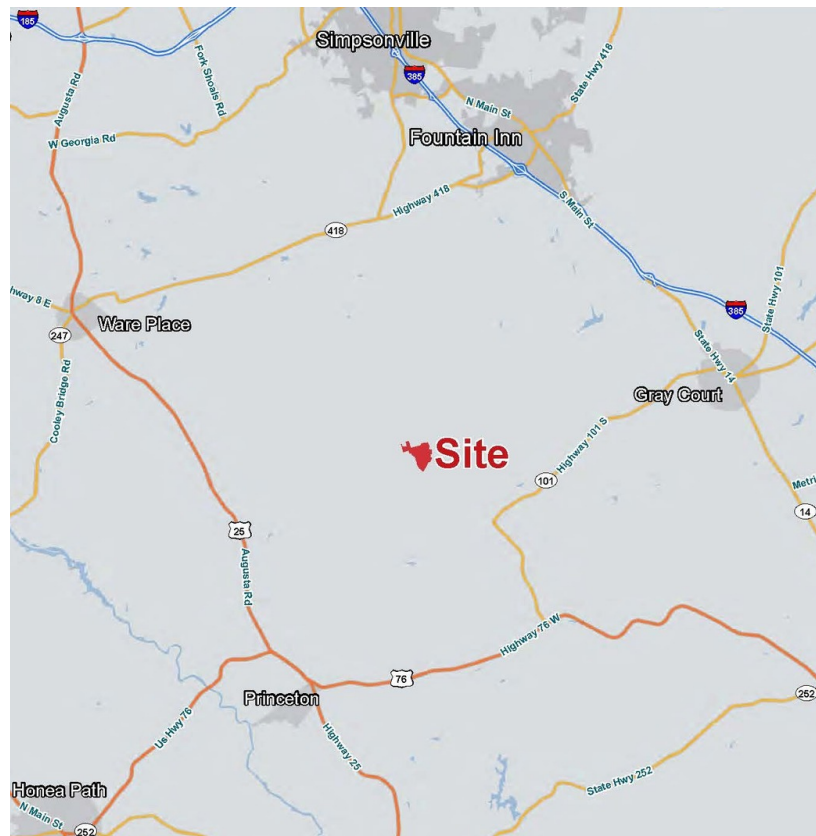
# ±13.90 Acres For Sale

Hillside Church Rd Fountain Inn, SC 29644



## Property Features

- P/O TM# 0565010101802
- Asking Price Reduced ~~\$528,200~~ **\$495,000**
- +-980 ft. of Martin Creek Frontage
- +-1.5 acre old
- Excellent home site
- +-35 minutes from downtown Greenville
- Survey available at buyer's request
- Nice mixture of hardwood creek bottom and loblolly pine



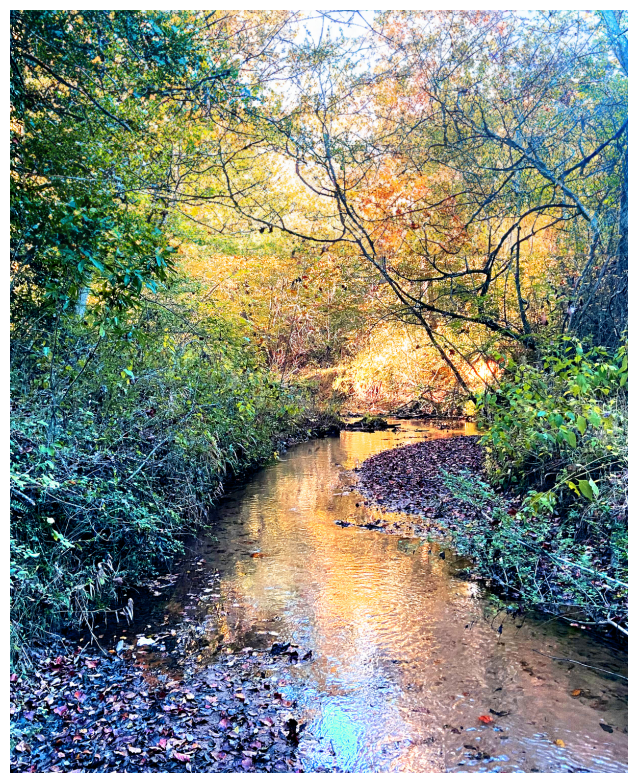
✉ Rusty Hamrick  
+1 864 232 9040  
rhamrick@naearlefurman.com

No Warranty Or Representation, Express Or Implied, Is Made As To The Accuracy Of The Information Contained Herein, And The Same Is Submitted Subject To Errors, Omissions, Change Of Price, Rental Or Other Conditions, Prior Sale, Lease Or Financing, Or Withdrawal Without Notice, And Of Any Special Listing Conditions Imposed By Our Principals No Warranties Or Representations Are Made As To The Condition Of The Property Or Any Hazards Contained Therein Are Any To Be Implied.

📍 101 E Washington St  
Greenville, SC 29601  
naearlefurman.com

# Property Photos

Hillside Church Rd Fountain Inn, SC 29644



✉ **Rusty Hamrick**  
+1 864 232 9040  
rhamrick@naiearlefurman.com

No Warranty Or Representation, Express Or Implied, Is Made As To The Accuracy Of The Information Contained Herein, And The Same Is Submitted Subject To Errors, Omissions, Change Of Price, Rental Or Other Conditions, Prior Sale, Lease Or Financing, Or Withdrawal Without Notice, And Of Any Special Listing Conditions Imposed By Our Principals No Warranties Or Representations Are Made As To The Condition Of The Property Or Any Hazards Contained Therein Are Any To Be Implied.

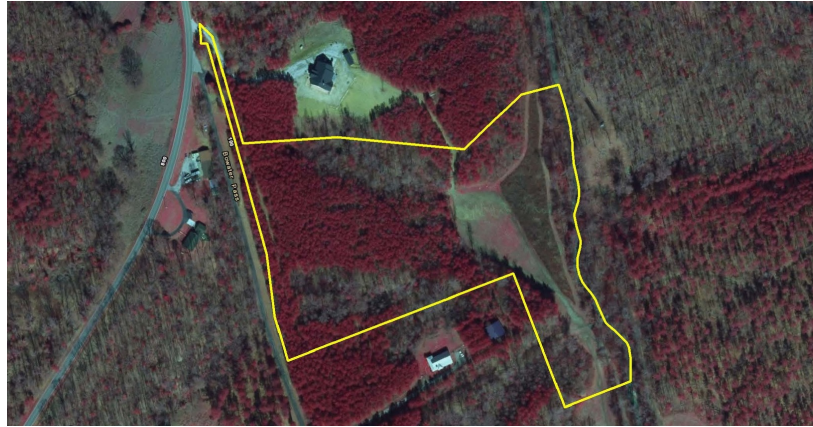
📍 **101 E Washington St**  
Greenville, SC 29601  
naiearlefurman.com

# Map Set

Hillside Church Rd Fountain Inn, SC 29644



Topographical Map



FEMA Flood Zones



National Wetlands Inv.



Soil Survey



- National Wetlands Inventory**
- Estuarine and Marine Deepwater
  - Estuarine and Marine Wetland
  - Freshwater Emergent Wetland
  - Freshwater Forest/Shrub Wetland
  - Freshwater Pond
  - Lake
  - Riverine

