

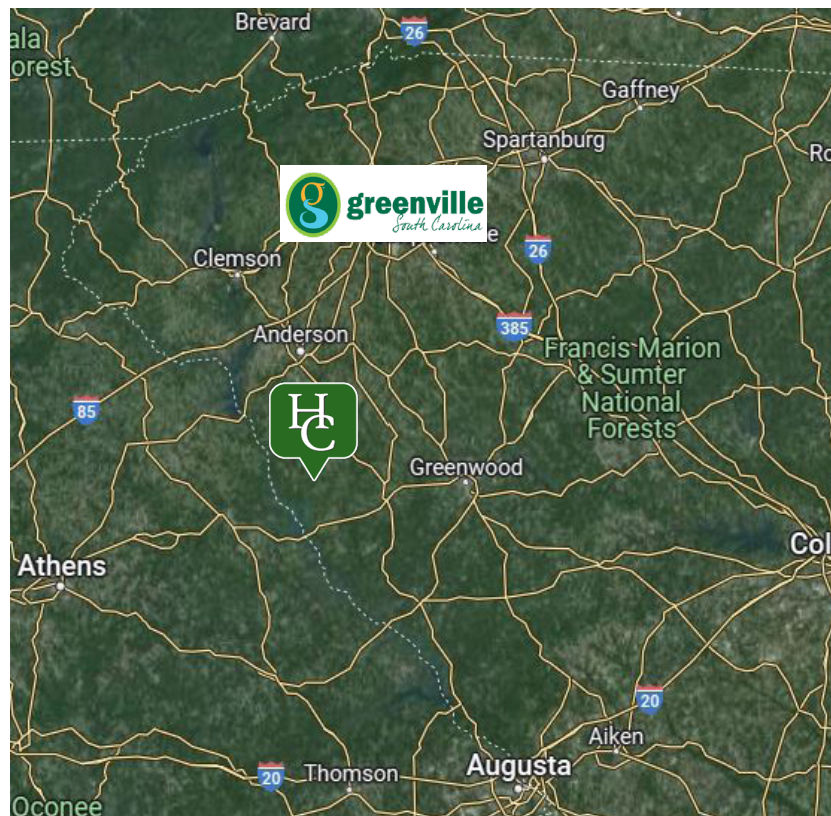
# Land - ±36 acres

1488 Charlies Creek Rd, Iva, SC 29655



## Property Features

- **\$350,000.00**
- 1,700 sq ft, 1 bedroom, 1 bath barndominium with full kitchen on property
- Well and septic
- Power and cable hook ups throughout the property for more structures to be added
- Borders the Army Core of Engineers buffer around Lake Russell on Charlie's Creek
- Well managed pine timber was harvested and reestablished in 2016
- Gated entrance with beautiful custom iron gate
- Graveled drive
- 2 miles from Charlies Creek boat ramp on Lake Russell
- 5 miles from Jets Landing Marina on Lake Secession



**Alec Moncini**

**864 238 5640**

**AMoncini@naiearlefurman.com**

No Warranty Or Representation, Express Or Implied, Is Made As To The Accuracy Of The Information Contained Herein, And The Same Is Submitted Subject To Errors, Omissions, Change Of Price, Rental Or Other Conditions, Prior Sale, Lease Or Financing, Or Withdrawal Without Notice, And Of Any Special Listing Conditions Imposed By Our Principals No Warranties Or Representations Are Made As To The Condition Of The Property Or Any Hazards Contained Therein Are Any To Be Implied.

The Timber and Recreational Land Division of NAI Earle Furman

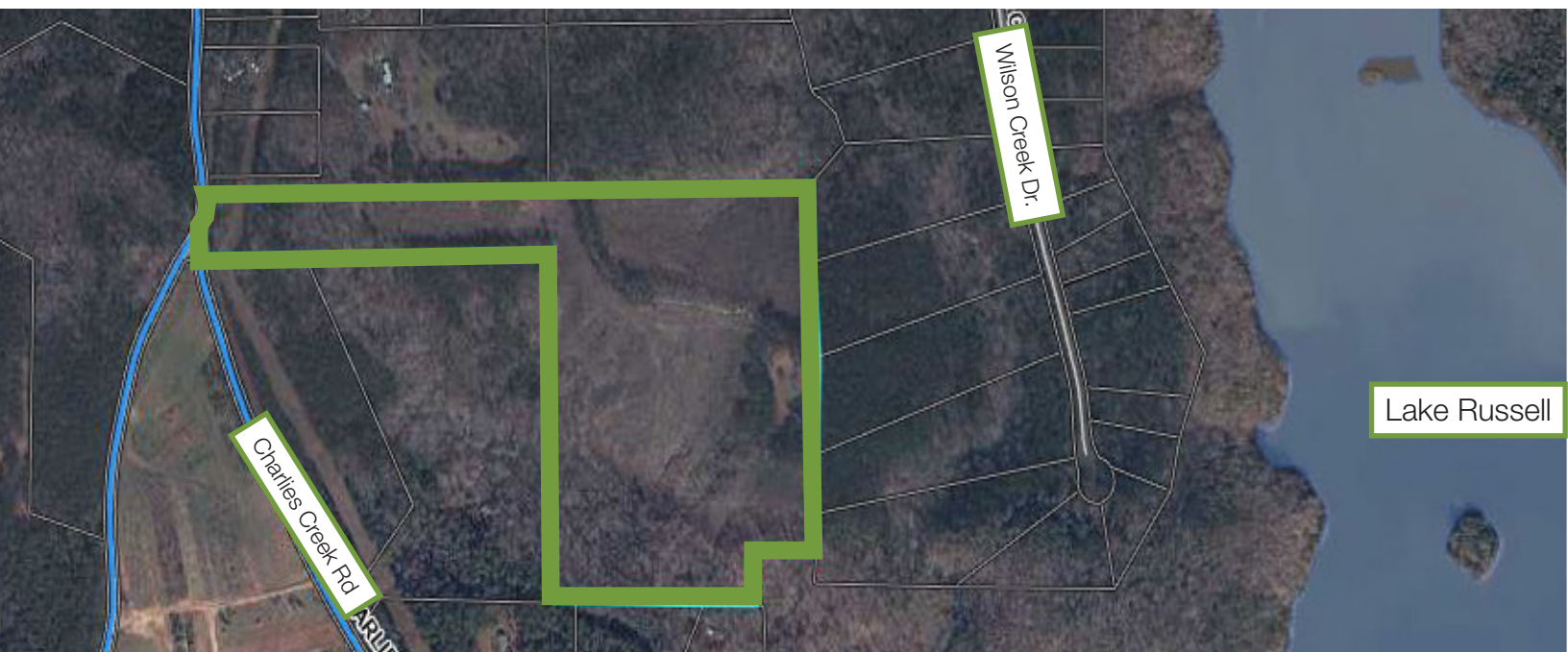
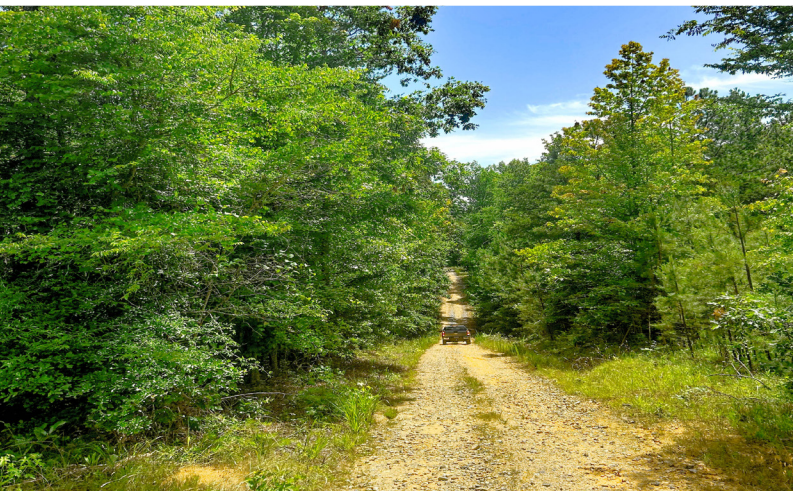
**1 Real Estate Way  
Spartanburg, SC 29302  
huffcreekproperties.com**



# Land Photos

1488 Charlies Creek Rd, Iva, SC 29655

 **Huff Creek**  
Properties



**Alec Moncini**

**864 238 5640**

**AMoncini@naiearlefurman.com**

No Warranty Or Representation, Express Or Implied, Is Made As To The Accuracy Of The Information Contained Herein, And The Same Is Submitted Subject To Errors, Omissions, Change Of Price, Rental Or Other Conditions, Prior Sale, Lease Or Financing, Or Withdrawal Without Notice, And Of Any Special Listing Conditions Imposed By Our Principals No Warranties Or Rep- resentations Are Made As To The Condition Of The Property Or Any Hazards Contained Therein Are Any To Be Implied.

The Timber and Recreational Land Division of NAI Earle Furman

**1 Real Estate Way**  
**Spartanburg, SC 29302**  
**huffcreekproperties.com**



# Barndo Photos

1488 Charlies Creek Rd, Iva, SC 29655

 Huff Creek  
Properties



Alec Moncini

864 238 5640

AMoncini@naiearlefurman.com

No Warranty Or Representation, Express Or Implied, Is Made As To The Accuracy Of The Information Contained Herein, And The Same Is Submitted Subject To Errors, Omissions, Change Of Price, Rental Or Other Conditions, Prior Sale, Lease Or Financing, Or Withdrawal Without Notice, And Of Any Special Listing Conditions Imposed By Our Principals No Warranties Or Rep- resentations Are Made As To The Condition Of The Property Or Any Hazards Contained Therein Are Any To Be Implied.

The Timber and Recreational Land Division of NAI Earle Furman

1 Real Estate Way  
Spartanburg, SC 29302  
huffcreekproperties.com