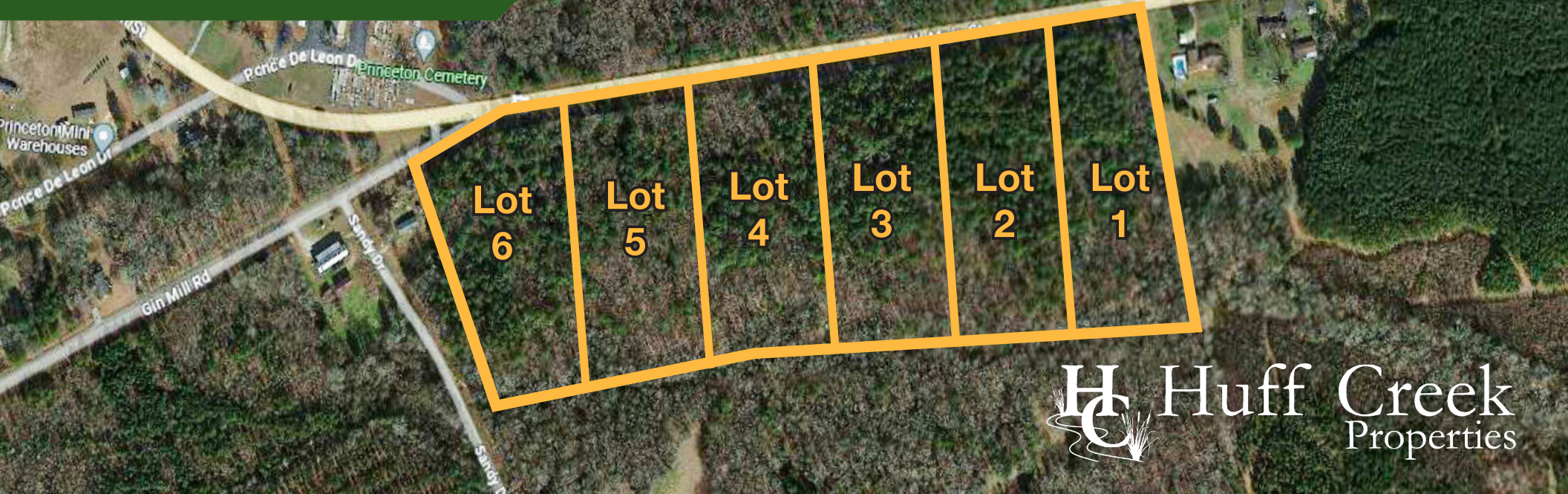


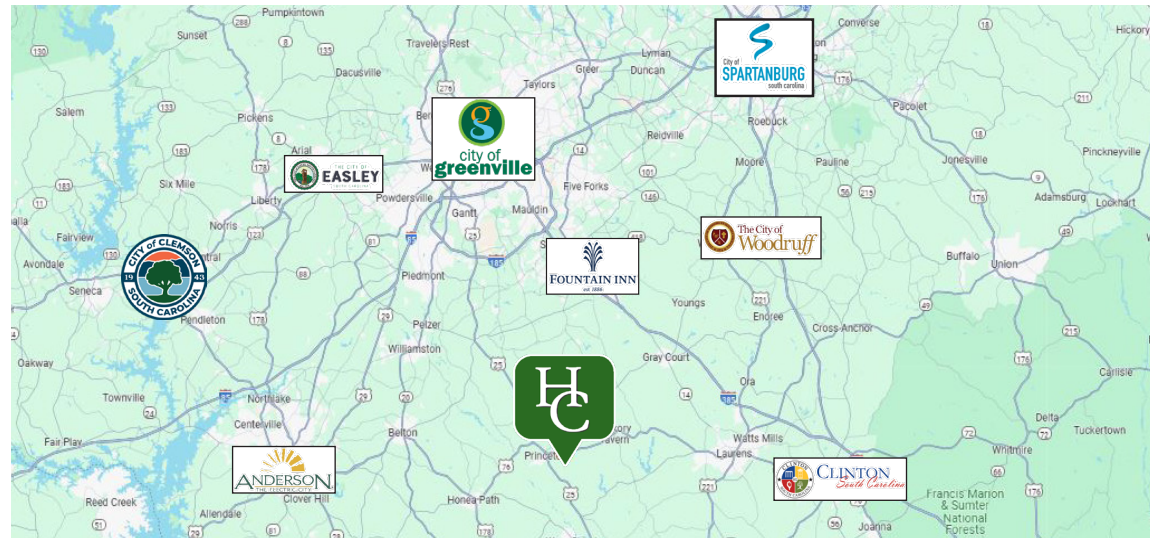
FOR SALE

±5 acre Mini Farm Lots
Gin Mill Road, Honea Path, SC



Property Features

- Mini farm lots available, all around ± 5 acres.
- Located in growing Laurens County
- Conveniently located while still in a quiet, rural setting.
- Property has city water accessible
- Beautiful hard wood creek bottom bordering the back property line
- Mature hardwood and pine mixed timber
- Fiber optic cable accessible to the property
- 35 minutes to Greenville



Alec Moncini

+1 864 238 5640

amoncini@naiearlefurman.com

The Timber and Recreational Land Division of NAI Earle Furman

No Warranty Or Representation, Express Or Implied, Is Made As To The Accuracy Of The Information Contained Herein, And The Same Is Submitted Subject To Errors, Omissions, Change Of Price, Rental Or Other Conditions, Prior Sale, Lease Or Financing, Or Withdrawal Without Notice, And Of Any Special Listing Conditions Imposed By Our Principals No Warranties Or Representations Are Made As To The Condition Of The Property Or Any Hazards Contained Therein Are Any To Be Implied.

1 Real Estate Way
Spartanburg, SC 29302
huffcreekproperties.com



FOR SALE

±5 acre Mini Farm Lots
Gin Mill Road, Honea Path, SC



Alec Moncini

+1 864 238 5640

amoncini@naiearlefurman.com

The Timber and Recreational Land Division of NAI Earle Furman

No Warranty Or Representation, Express Or Implied, Is Made As To The Accuracy Of The Information Contained Herein, And The Same Is Submitted Subject To Errors, Omissions, Change Of Price, Rental Or Other Conditions, Prior Sale, Lease Or Financing, Or Withdrawal Without Notice, And Of Any Special Listing Conditions Imposed By Our Principals No Warranties Or Rep- resentations Are Made As To The Condition Of The Property Or Any Hazards Contained Therein Are Any To Be Implied.

1 Real Estate Way

Spartanburg, SC 29302

huffcreekproperties.com



The Timber and Recreational Land Division
of NAI Earle Furman

±5 acre Mini Farm Lots
Gin Mill Road, Honea Path, SC



LOT #	LOT SIZE	SALE PRICE
1	5.10	\$199,000
2	5.10	\$199,000
3	5.10	\$199,000
4	5.10	\$199,000
5	5.09	\$199,000
6	5.00	\$199,000



The Timber and Recreational Land Division of NAI Earle Furman

No Warranty Or Representation, Express Or Implied, Is Made As To The Accuracy Of The Information Contained Herein, And The Same Is Submitted Subject To Errors, Omissions, Change Of Price, Rental Or Other Conditions, Prior Sale, Lease Or Financing, Or Withdrawal Without Notice, And Of Any Special Listing Conditions Imposed By Our Principals No Warranties Or Rep- resentations Are Made As To The Condition Of The Property Or Any Hazards Contained Therein Are Any To Be Implied.



Huff Creek Properties
The Timber and Recreational Land Division of NAI Farley Egan