

±52.29 Acre Recreational Tract

3367 Pinckney Road | Chester, SC 29706



REDUCED: \$499,000.00

~~SALE PRICE: \$512,422~~



VIEW SITE VIDEO



Beautiful and Manageable Property with Creek Frontage & Hunting Opportunities

Property Overview

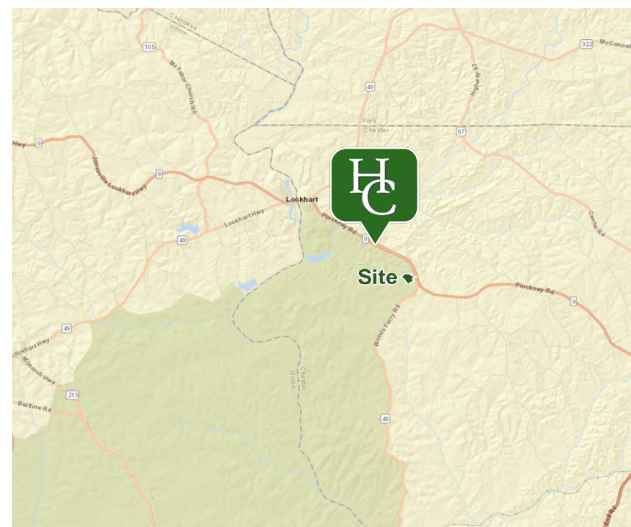
- Chester County GIS #: 019-00-00-128-000
- Creek Frontage: ±2,400 feet
- Highway Frontage: ±150 feet on Hwy 9

Property Location

- 14 minutes from downtown Chester
- 1 hour from Charlotte, NC
- 48 minutes from Spartanburg, SC
- 1 hour 23 minutes from Greenville, SC

Property Features

- Trail System: Extensive trail system throughout, which could serve as fire breaks
- Water Source: Well located on the property
- Timber: mix of mature hardwoods and 20+ year old regenerative timber
- Pond: 0.3 - 0.5-acre pond
- Hunting: Excellent property for deer and turkey hunting
- Field: 1.5-acre field ideal for recreation or agricultural use



Gabe Blevins *Associate*

+1 828 400 2455

gblevins@naiearlefurman.com

101 E Washington St

Greenville, SC 29601

huffcreekproperties.com

No Warranty Or Representation, Express Or Implied, Is Made As To The Accuracy Of The Information Contained Herein, And The Same Is Submitted Subject To Errors, Omissions, Change Of Price, Rental Or Other Conditions, Prior Sale, Lease Or Financing, Or Withdrawal Without Notice, And Of Any Special Listing Conditions Imposed By Our Principals No Warranties Or Representations Are Made As To The Condition Of The Property Or Any Hazards Contained Therein Are Any To Be Implied.

The Timber and Recreational Land Division of NAI Earle Furman

Property Description

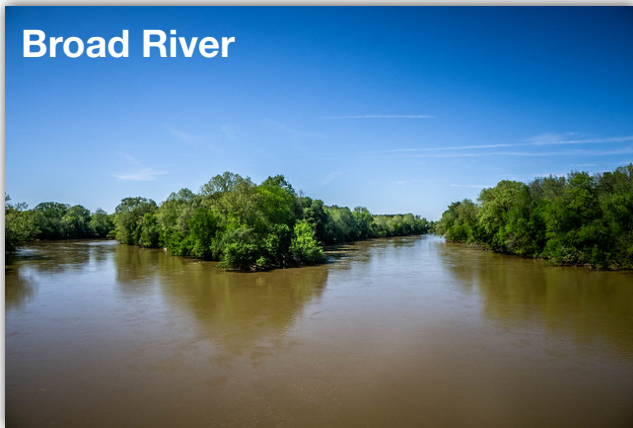
3367 Pinckney Road | Chester, SC 29706



SUMTER NATIONAL FOREST is just a few miles down the road, along with boat access to the broad river.



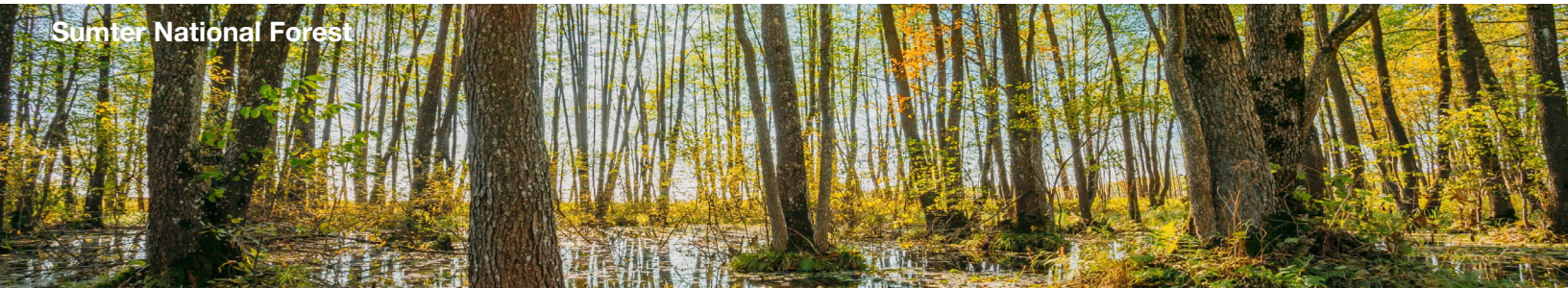
Broad River



This property offers the perfect combination of natural beauty and functionality.

Whether you're looking for hunting land, a weekend retreat, or a place to build your dream home, this property is an excellent choice!

Sumter National Forest



Gabe Blevins *Associate*

+1 828 400 2455

gblevins@naiearlefurman.com

No Warranty Or Representation, Express Or Implied, Is Made As To The Accuracy Of The Information Contained Herein, And The Same Is Submitted Subject To Errors, Omissions, Change Of Price, Rental Or Other Conditions, Prior Sale, Lease Or Financing, Or Withdrawal Without Notice, And Of Any Special Listing Conditions Imposed By Our Principals No Warranties Or Rep- resentations Are Made As To The Condition Of The Property Or Any Hazards Contained Therein Are Any To Be Implied.

The Timber and Recreational Land Division of NAI Earle Furman

Property Photos

3367 Pinckney Road | Chester, SC 29706



Gabe Blevins *Associate*

+1 828 400 2455

gblevins@naiearlefurman.com

No Warranty Or Representation, Express Or Implied, Is Made As To The Accuracy Of The Information Contained Herein, And The Same Is Submitted Subject To Errors, Omissions, Change Of Price, Rental Or Other Conditions, Prior Sale, Lease Or Financing, Or Withdrawal Without Notice, And Of Any Special Listing Conditions Imposed By Our Principals No Warranties Or Representations Are Made As To The Condition Of The Property Or Any Hazards Contained Therein Are Any To Be Implied.

The Timber and Recreational Land Division of NAI Earle Furman

Property Photos

3367 Pinckney Road | Chester, SC 29706



Gabe Blevins *Associate*

+1 828 400 2455

gblevins@naiearlefurman.com

No Warranty Or Representation, Express Or Implied, Is Made As To The Accuracy Of The Information Contained Herein, And The Same Is Submitted Subject To Errors, Omissions, Change Of Price, Rental Or Other Conditions, Prior Sale, Lease Or Financing, Or Withdrawal Without Notice, And Of Any Special Listing Conditions Imposed By Our Principals No Warranties Or Representations Are Made As To The Condition Of The Property Or Any Hazards Contained Therein Are Any To Be Implied.

The Timber and Recreational Land Division of NAI Earle Furman

Property Photos

3367 Pinckney Road | Chester, SC 29706



Gabe Blevins *Associate*

+1 828 400 2455

gblevins@naiearlefurman.com

No Warranty Or Representation, Express Or Implied, Is Made As To The Accuracy Of The Information Contained Herein, And The Same Is Submitted Subject To Errors, Omissions, Change Of Price, Rental Or Other Conditions, Prior Sale, Lease Or Financing, Or Withdrawal Without Notice, And Of Any Special Listing Conditions Imposed By Our Principals No Warranties Or Representations Are Made As To The Condition Of The Property Or Any Hazards Contained Therein Are Any To Be Implied.

The Timber and Recreational Land Division of NAI Earle Furman

Map Set

3367 Pinckney Road | Chester, SC 29706



Aerial



2020 Infrared



Topographical Map



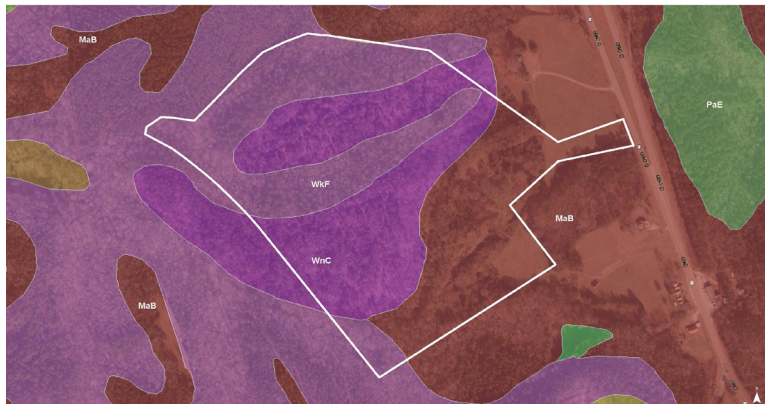
Flood Zones



National Wetlands Inv.



Soil Survey



Gabe Blevins Associate

+1 828 400 2455

gblevins@naiearlefurman.com

No Warranty Or Representation, Express Or Implied, Is Made As To The Accuracy Of The Information Contained Herein, And The Same Is Submitted Subject To Errors, Omissions, Change Of Price, Rental Or Other Conditions, Prior Sale, Lease Or Financing, Or Withdrawal Without Notice, And Of Any Special Listing Conditions Imposed By Our Principals No Warranties Or Representations Are Made As To The Condition Of The Property Or Any Hazards Contained Therein Are Any To Be Implied.

The Timber and Recreational Land Division of NAI Earle Furman