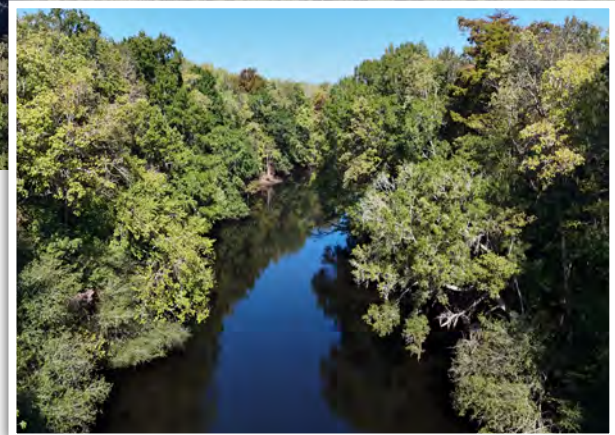


# Brewington Lake Tract | ±548.30 Acres

N. Brewington Road, Manning SC 29102



**SALE PRICE: \$1,750/Acre**



## Property Features

- Clarendon County TM #289-00-01-001-00
- ±0.65 miles of frontage on Brewington Road
- ±0.65 miles of frontage on the Pocotaligo River and Brewington Lake
- The Pocotaligo River public boat landing is across the bridge providing direct boat access to Brewington Lake
- The property is located between the towns of Manning and Greelyville (approximately 30 minutes from Sumter, SC, and 1.5 hours from downtown Charleston and downtown Columbia)
- Excellent hunting opportunities for deer, turkeys, and hogs
- Excellent fishing opportunities for largemouth, bowfin, and warmouth



**Rusty Hamrick**  
+1 864 678 5999  
rhamrick@naief.com

**John Etheridge**  
+1 864 908 9708  
jetheridge@naief.com

101 E Washington St  
Greenville, SC 29601  
huffcreekproperties.com



# Property Description

**N. Brewington Road, Manning SC 29102**



The Brewington Lake Tract,  $\pm 548.30$  acres of raw bottomland in northeastern Clarendon County, offers a unique combination of recreational opportunities. The northern half of Brewington Lake stretches along the property's southwestern boundary line for close to a quarter of a mile. A beautiful natural feature, this 7-acre widening in the Pocotaligo River holds fishable populations of largemouth, bowfin, and warmouth.

The timber on the property consists of mostly mature hardwood and includes a portion of regrowth that was clearcut in the past. Deer, turkeys, and hogs thrive in this type of habitat and waterfowl use the Pocotaligo River and Brewington Lake as well. Also, the property is located just over a mile upstream from the convergence of the Pocotaligo River and you would be hard pressed to find better located recreational tract in the Pee Dee River basin watershed.

**Rusty Hamrick**  
**+1 864 678 5999**  
**rahamrick@naief.com**

**John Etheridge**  
**+1 864 908 9708**  
**jetheridge@naief.com**

This material may contain content generated with AI assistance and publicly sourced data. NAI Earle Furman and Huff Creek Properties make every effort to verify the information but makes no warranties or representations regarding the accuracy, completeness, or reliability of the information. Independent verification of all details is strongly encouraged. Prices, terms, and availability are subject to change without prior notice.

The Timber and Recreational Land Division of NAI Earle Furman



# Property Photos

N. Brewington Road, Manning SC 29102



**Rusty Hamrick**  
+1 864 678 5999  
rhamrick@naief.com

**John Etheridge**  
+1 864 908 9708  
jetheridge@naief.com

This material may contain content generated with AI assistance and publicly sourced data. NAI Earle Furman and Huff Creek Properties make every effort to verify the information but makes no warranties or representations regarding the accuracy, completeness, or reliability of the information. Independent verification of all details is strongly encouraged. Prices, terms, and availability are subject to change without prior notice.

The Timber and Recreational Land Division of NAI Earle Furman



# Drone Photography

N. Brewington Road, Manning SC 29102



**Rusty Hamrick**  
+1 864 678 5999  
rhamrick@naief.com

**John Etheridge**  
+1 864 908 9708  
jetheridge@naief.com

This material may contain content generated with AI assistance and publicly sourced data. NAI Earle Furman and Huff Creek Properties make every effort to verify the information but makes no warranties or representations regarding the accuracy, completeness, or reliability of the information. Independent verification of all details is strongly encouraged. Prices, terms, and availability are subject to change without prior notice.

The Timber and Recreational Land Division of NAI Earle Furman



# Map Set

N. Brewington Road, Manning SC 29102

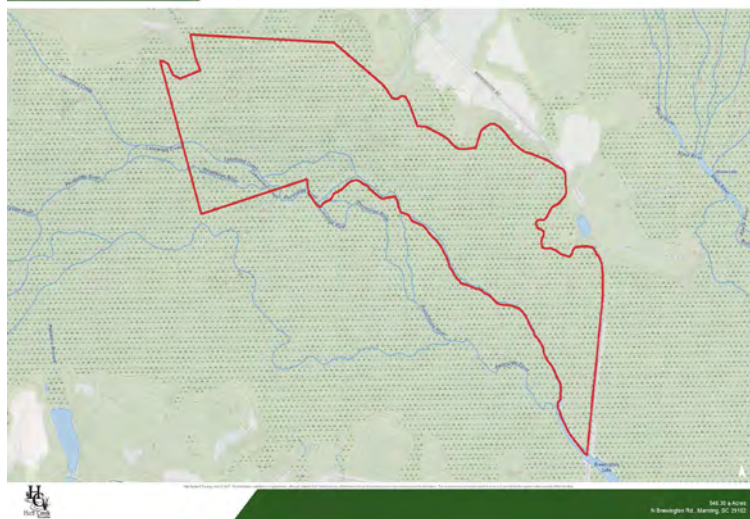
Aerial



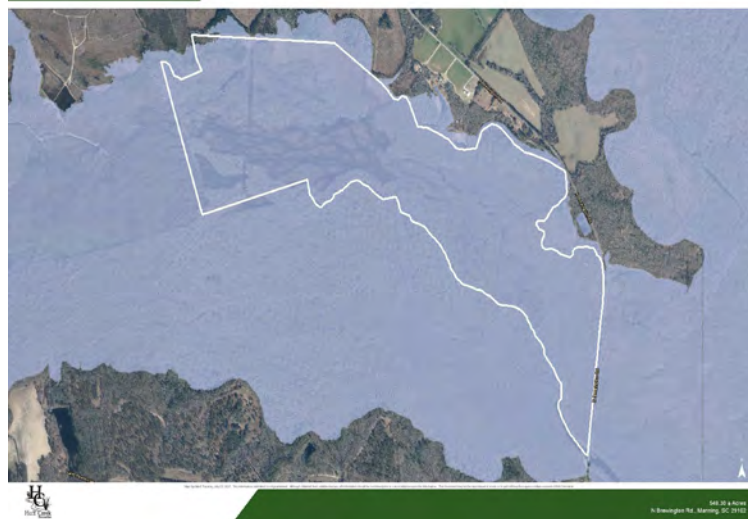
2020 Infrared



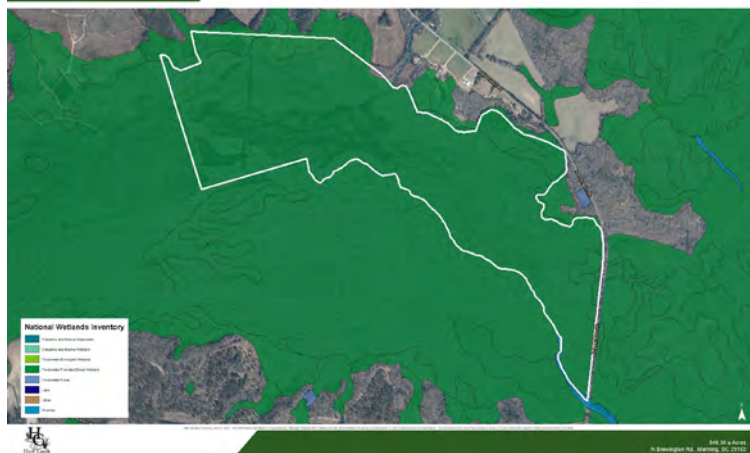
Topographical Map



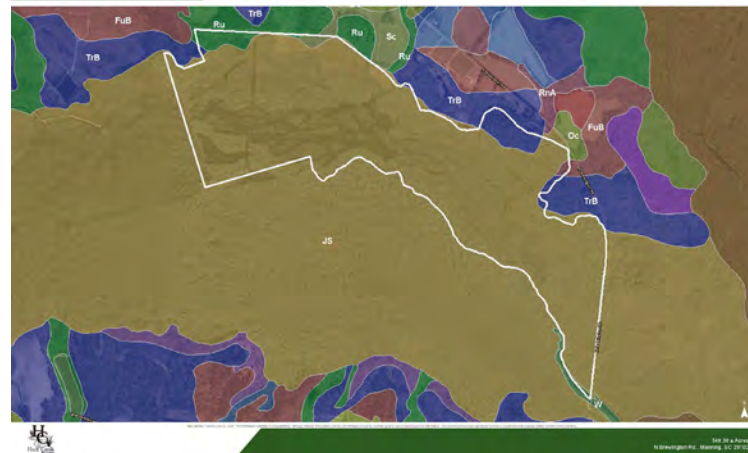
Flood Zones



National Wetlands Inv.



Soil Survey



**Rusty Hamrick**  
+1 864 678 5999  
rhamrick@naief.com

**John Etheridge**  
+1 864 908 9708  
jetheridge@naief.com

This material may contain content generated with AI assistance and publicly sourced data. NAI Earle Furman and Huff Creek Properties make every effort to verify the information but makes no warranties or representations regarding the accuracy, completeness, or reliability of the information. Independent verification of all details is strongly encouraged. Prices, terms, and availability are subject to change without prior notice.

The Timber and Recreational Land Division of NAI Earle Furman