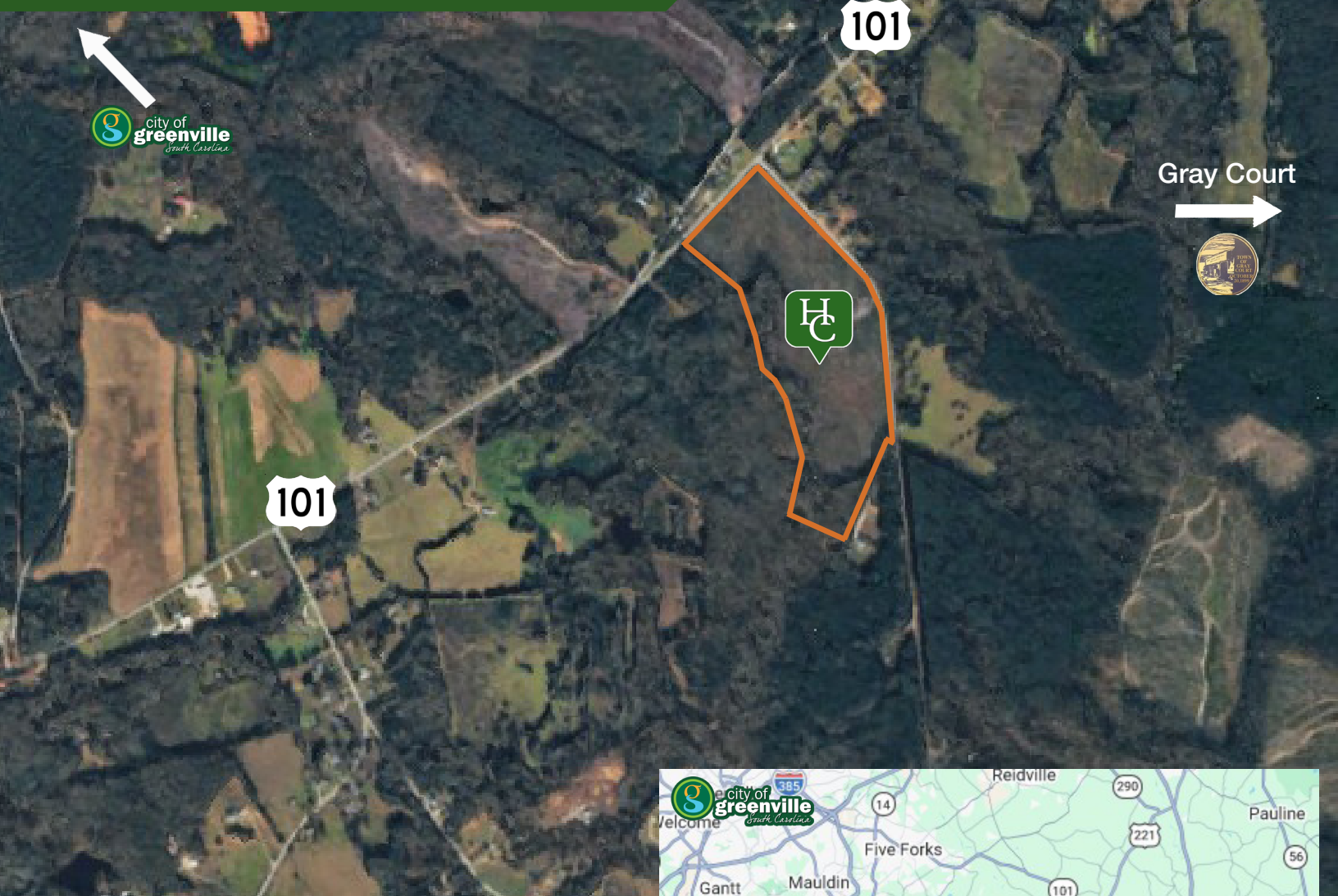


FOR SALE

Highway 101 and Hellams Circle
Gray Court, SC 29645

 Huff Creek
Properties



Property Features

- ±43 Acres of raw land, ideal for recreational use or development
- Laurens County Tax Map #159-00-00-004
- Price: \$967,500
- ±3 minute drive to downtown Gray Court
- ±11 minute drive to downtown Fountain Inn
- ±31 minute drive to downtown Greenville



Will Rogers
864-906-0339
wrogers@naiearlefurman.com

No Warranty Or Representation, Express Or Implied, Is Made As To The Accuracy Of The Information Contained Herein, And The Same Is Submitted Subject To Errors, Omissions, Change Of Price, Rental Or Other Conditions, Prior Sale, Lease Or Financing, Or Withdrawal Without Notice, And Of Any Special Listing Conditions Imposed By Our Principals No Warranties Or Representations Are Made As To The Condition Of The Property Or Any Hazards Contained Therein Are Any To Be Implied.

The Timber and Recreational Land Division of NAI Earle Furman

101 E Washington St
Greenville, SC 29601
huffcreekproperties.com