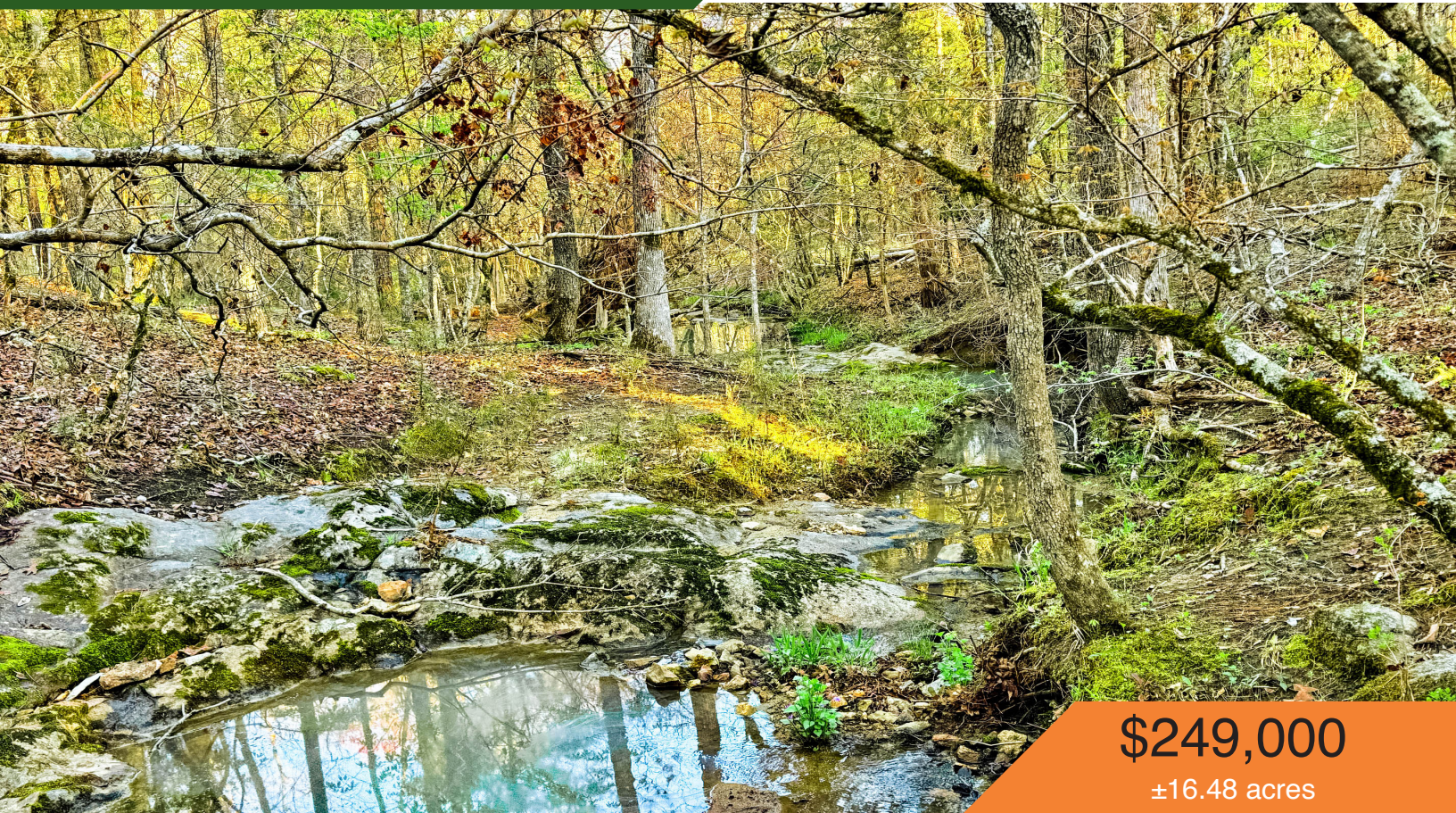


FOR SALE

Dutchman Creek Farms, Pauline, SC

Huff Creek Properties

The Timber and Recreational Land Division of NAI Earle Furman

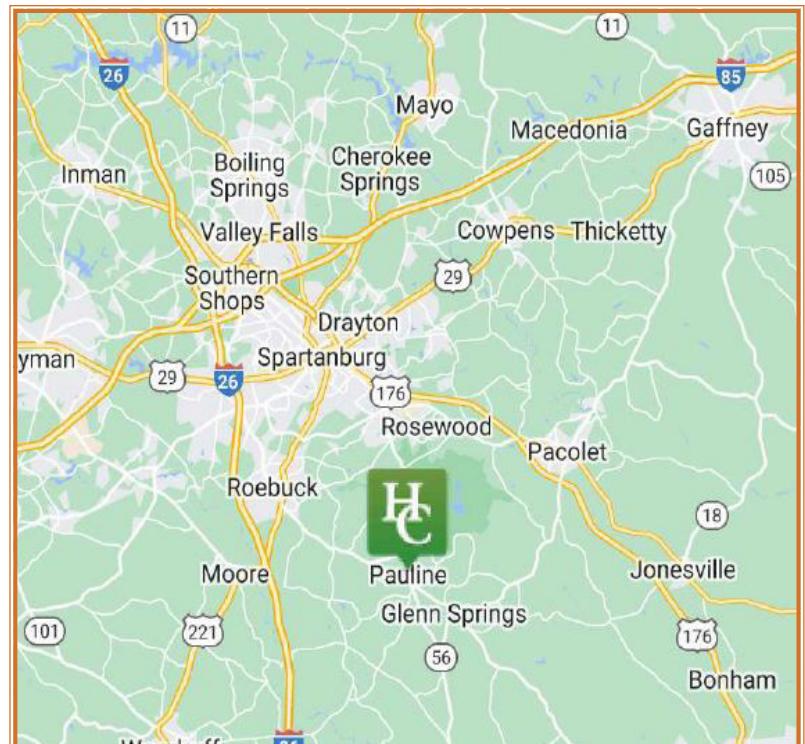


\$249,000

±16.48 acres

Property Features

- 16.48 acres of Spartanburg County tax map #6-67-00-020.03
- 15-minute drive to Downtown Spartanburg
- Frontage on Fields Road
- Spartanburg County District 6 Schools
- Rolling topography
- Mature, managed pines
- Subject to Covenants & Restrictions
- Power service provider- Duke Power Carolinas



Dallas Wright
+1 843 505 2644
dwright@naiearlefurman.com

No Warranty Or Representation, Express Or Implied, Is Made As To The Accuracy Of The Information Contained Herein, And The Same Is Submitted Subject To Errors, Omissions, Change Of Price, Rental Or Other Conditions, Prior Sale, Lease Or Financing, Or Withdrawal Without Notice, And Of Any Special Listing Conditions Imposed By Our Principals No Warranties Or Rep- resentations Are Made As To The Condition Of The Property Or Any Hazards Contained Therein Are Any To Be Implied.

101 E. Washington St
Greenville, SC 29601
huffcreekproperties.com

FOR SALE

Dutchman Creek Farms, Pauline, SC

 Huff Creek
Properties

The Timber and Recreational Land Division of NAI Earle Furman



Dont miss this opportunity in Dutchman Creek Farms, where you can get away from it all and relax in the towering pines while listening to a waterfall right in your own backyard. This extraordinary parcel has been meticulously managed as a haven for both timber and recreational pursuits, and now it presents an unparalleled opportunity as a residential home site.

Nestled in the charming community of Pauline just 15 minutes away from the heart of Downtown Spartanburg. Nearby are several service stations, a Family Dollar, and Coleman Farm Supply, as well as a selection of local restaurants. Land like this rarely comes to market in this area, making this a truly extraordinary opportunity that must not be missed.

Dallas Wright
+1 843 505 2644
dwright@naiearlefurman.com

No Warranty Or Representation, Express Or Implied, Is Made As To The Accuracy Of The Information Contained Herein, And The Same Is Submitted Subject To Errors, Omissions, Change Of Price, Rental Or Other Conditions, Prior Sale, Lease Or Financing, Or Withdrawal Without Notice, And Of Any Special Listing Conditions Imposed By Our Principals No Warranties Or Representations Are Made As To The Condition Of The Property Or Any Hazards Contained Therein Are Any To Be Implied.

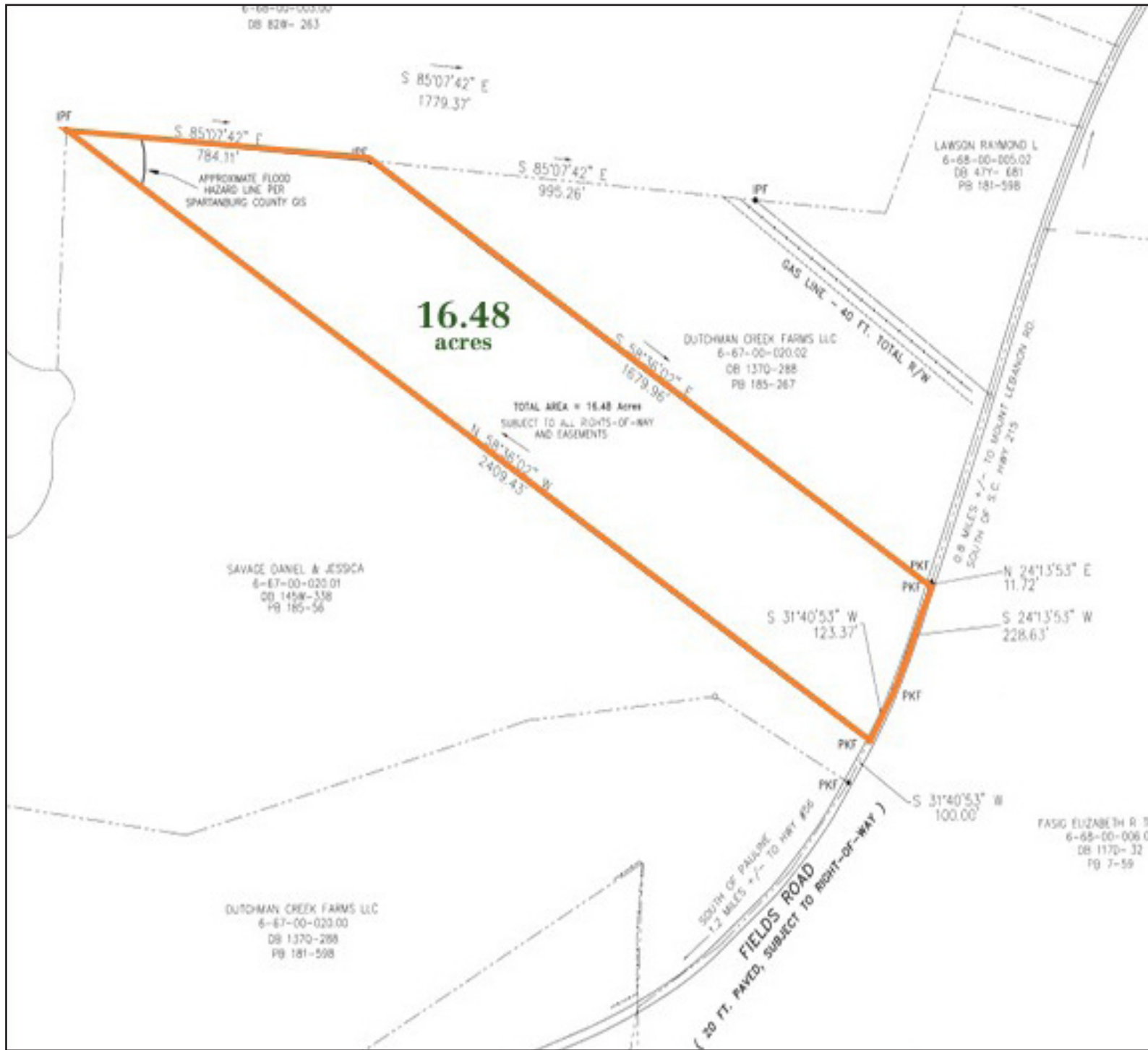
101 E. Washington St
Greenville, SC 29601
huffcreekproperties.com

FOR SALE

Dutchman Creek Farms, Pauline, SC



The Timber and Recreational Land Division of NAI Earle Furman



Dallas Wright
+1 843 505 2644
dwright@naiearlefurman.com

No Warranty Or Representation, Express Or Implied, Is Made As To The Accuracy Of The Information Contained Herein, And The Same Is Submitted Subject To Errors, Omissions, Change Of Price, Rental Or Other Conditions, Prior Sale, Lease Or Financing, Or Withdrawal Without Notice, And Of Any Special Listing Conditions Imposed By Our Principals No Warranties Or Rep- resentations Are Made As To The Condition Of The Property Or Any Hazards Contained Therein Are Any To Be Implied.

101 E. Washington St
Greenville, SC 29601
huffcreekproperties.com