

Location



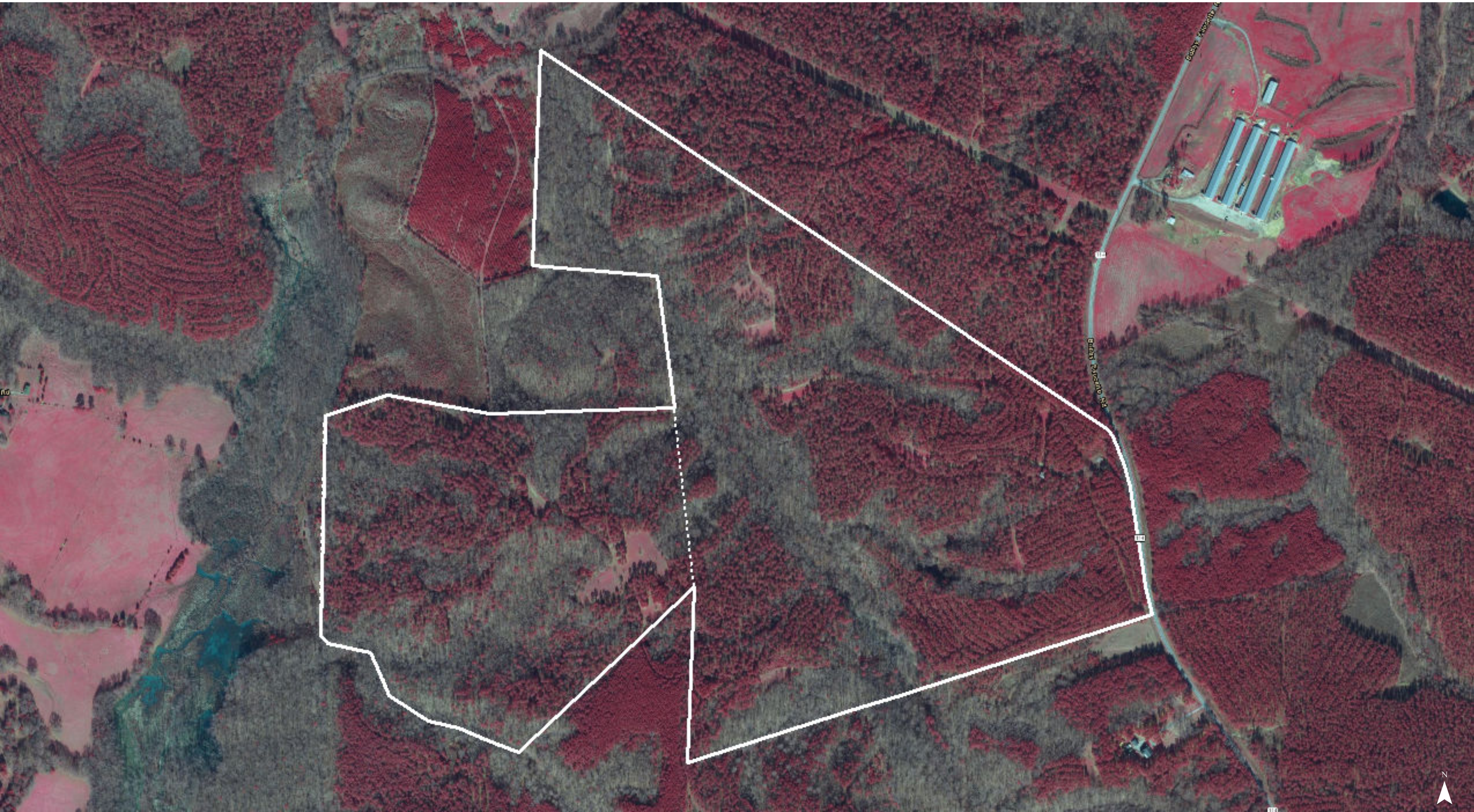
Map Updated: Thursday, April 3, 2025. This information submitted is not guaranteed. Although obtained from reliable sources, all information should be confirmed prior to use or reliance upon the information. This document may not be reproduced in whole or in part without the express written consent of NAI Columbia.



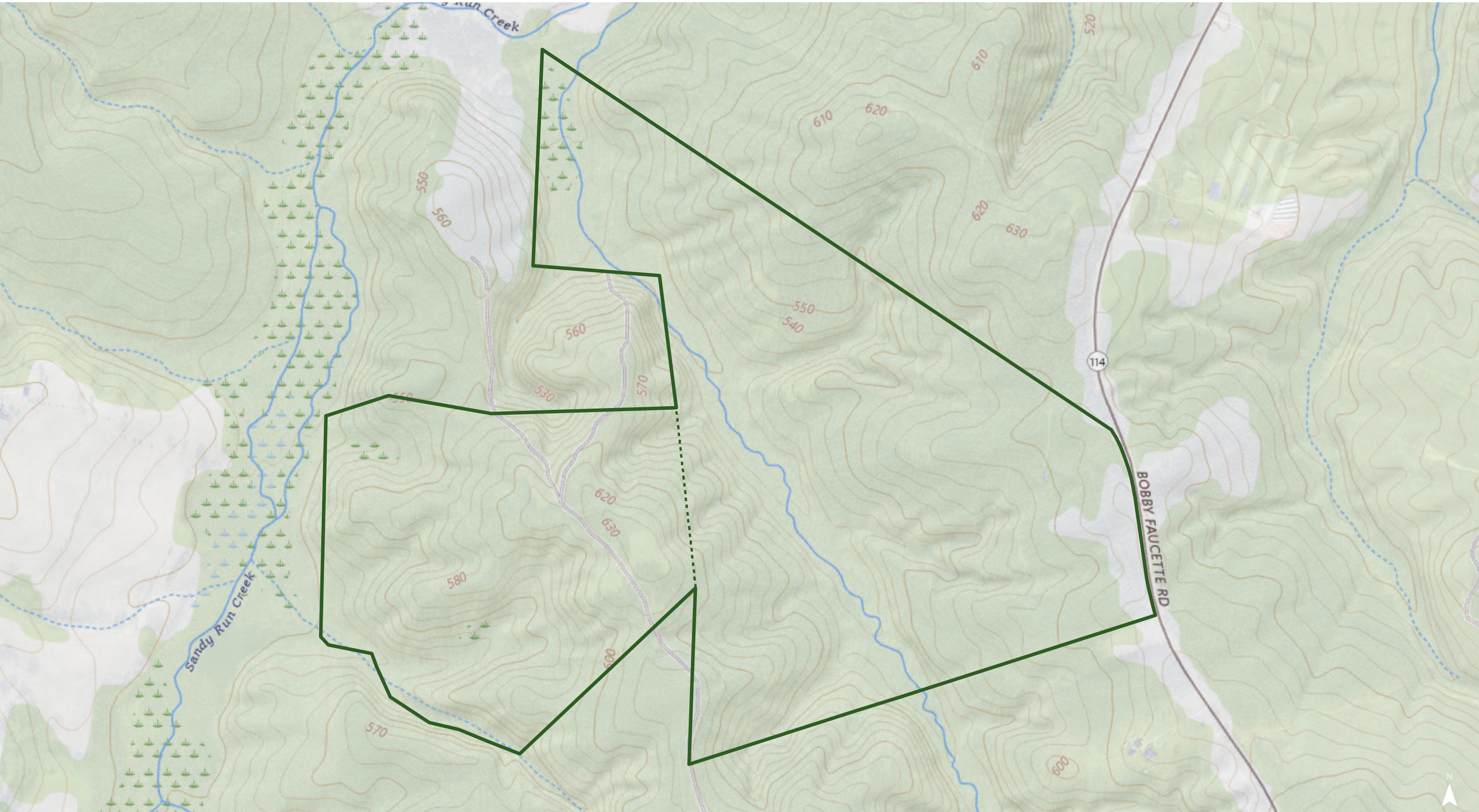


Map Updated: Thursday, April 3, 2025. This information submitted is not guaranteed. Although obtained from reliable sources, all information should be confirmed prior to use or reliance upon the information. This document may not be reproduced in whole or in part without the express written consent of NAI Columbia.





Map Updated: Thursday, April 3, 2025. This information submitted is not guaranteed. Although obtained from reliable sources, all information should be confirmed prior to use or reliance upon the information. This document may not be reproduced in whole or in part without the express written consent of NAI Columbia.

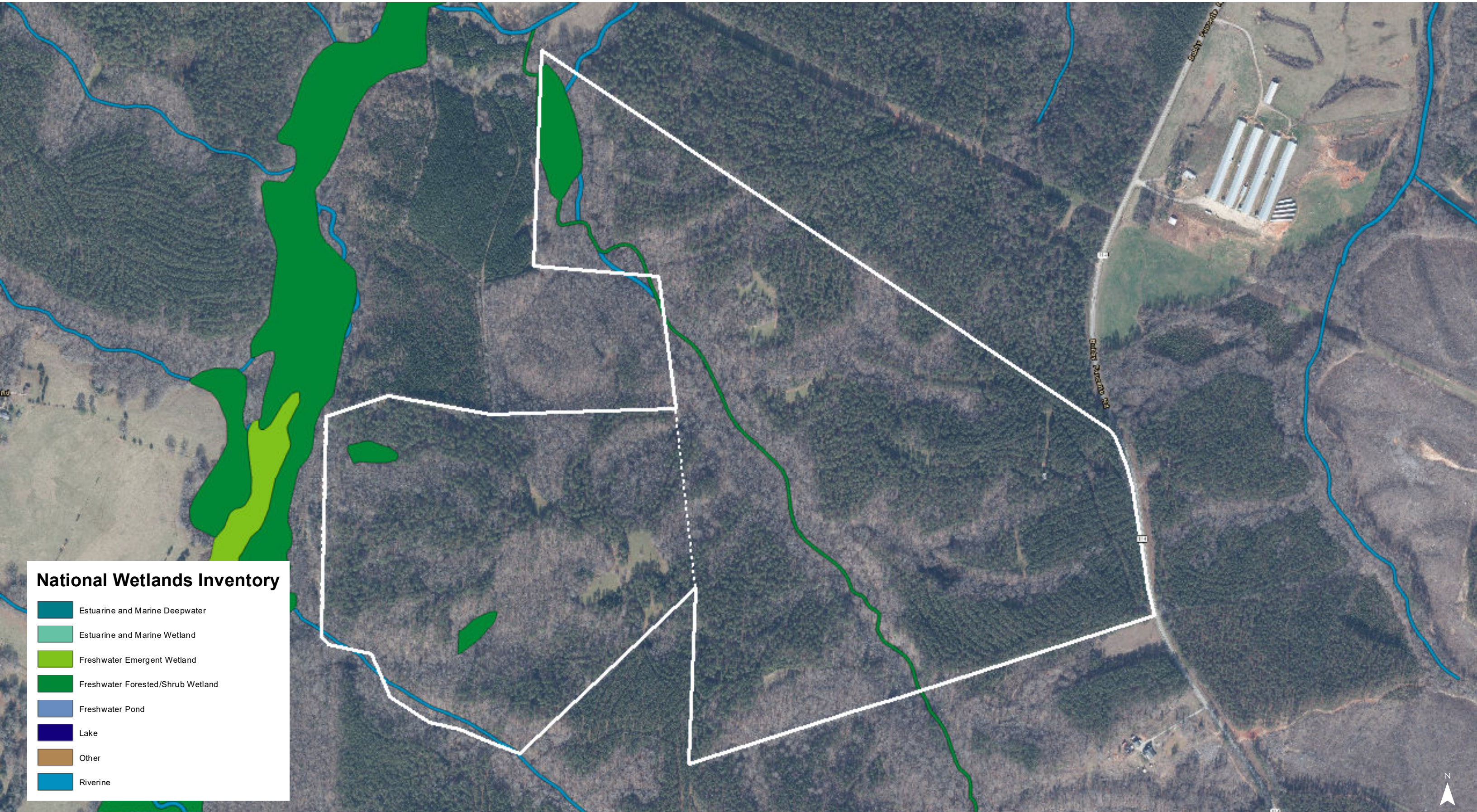


Map Updated: Thursday, April 3, 2025. This information submitted is not guaranteed. Although obtained from reliable sources, all information should be confirmed prior to use or reliance upon the information. This document may not be reproduced in whole or in part without the express written consent of NAI Columbia.

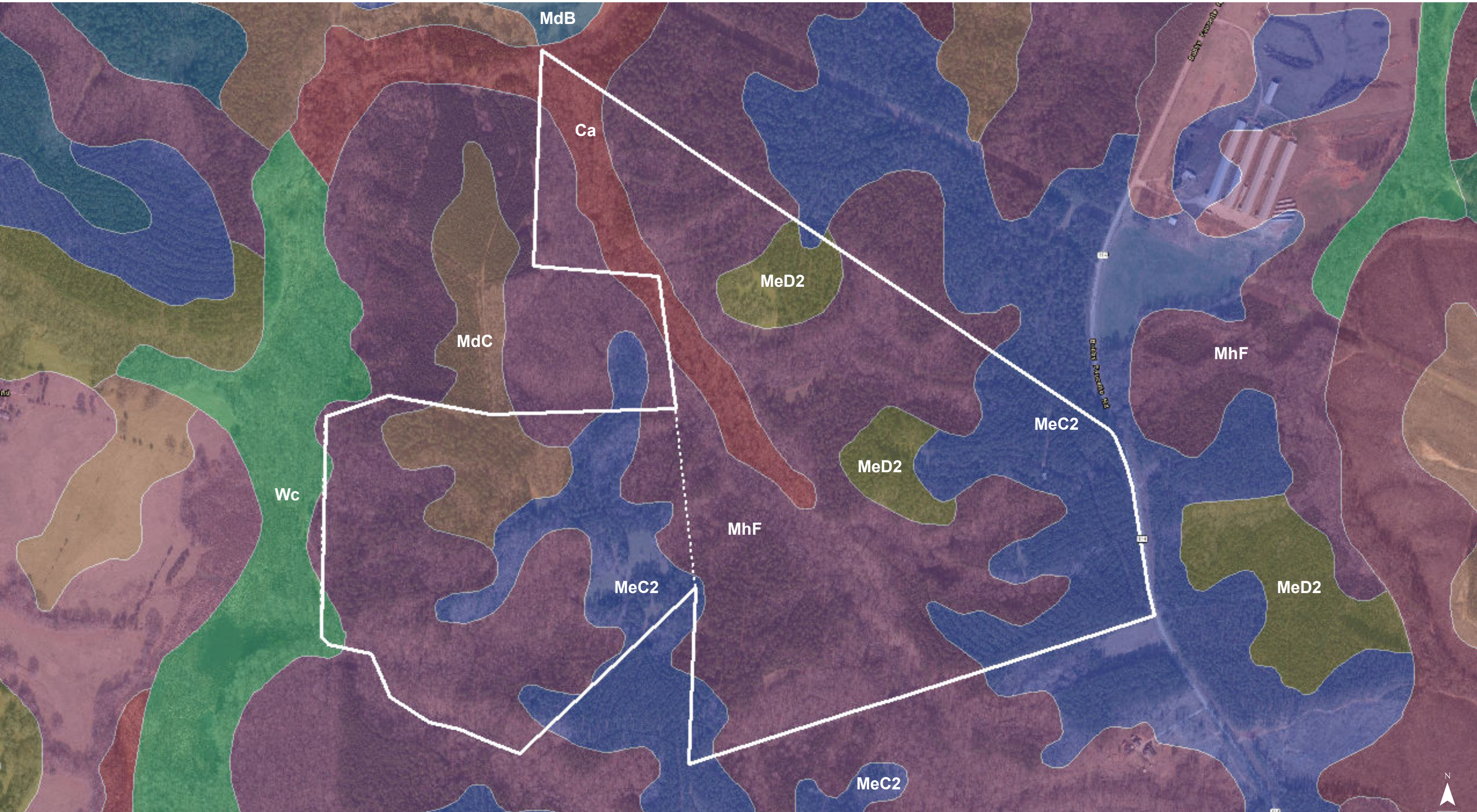




Map Updated: Thursday, April 3, 2025. This information submitted is not guaranteed. Although obtained from reliable sources, all information should be confirmed prior to use or reliance upon the information. This document may not be reproduced in whole or in part without the express written consent of NAI Columbia.



Map Updated: Thursday, April 3, 2025. This information submitted is not guaranteed. Although obtained from reliable sources, all information should be confirmed prior to use or reliance upon the information. This document may not be reproduced in whole or in part without the express written consent of NAI Columbia.



Map Updated: Thursday, April 3, 2025. This information submitted is not guaranteed. Although obtained from reliable sources, all information should be confirmed prior to use or reliance upon the information. This document may not be reproduced in whole or in part without the express written consent of NAI Columbia.

Map Unit Description (Brief, Generated)

Union County, South Carolina

[Minor map unit components are excluded from this report]

Map unit: Ca - Cartecay-Toccoa complex

Component: Cartecay (55%)

The Cartecay component makes up 55 percent of the map unit. Slopes are 0 to 2 percent. This component is on flood plains on piedmonts. The parent material consists of loamy alluvium. Depth to a root restrictive layer is greater than 60 inches. The natural drainage class is somewhat poorly drained. Water movement in the most restrictive layer is high. Available water to a depth of 60 inches (or restricted depth) is low. Shrink-swell potential is low. This soil is occasionally flooded. It is not ponded. A seasonal zone of water saturation is at 12 inches during January, February, March, April. Organic matter content in the surface horizon is about 2 percent. This component is in the F136XY610GA Flood plain forest, wet ecological site. Nonirrigated land capability classification is 3w. This soil does not meet hydric criteria.

Component: Toccoa (40%)

The Toccoa component makes up 40 percent of the map unit. Slopes are 0 to 2 percent. This component is on flood plains on piedmonts. The parent material consists of loamy alluvium. Depth to a root restrictive layer is greater than 60 inches. The natural drainage class is moderately well drained. Water movement in the most restrictive layer is high. Available water to a depth of 60 inches (or restricted depth) is low. Shrink-swell potential is low. This soil is occasionally flooded. It is not ponded. A seasonal zone of water saturation is at 45 inches during January, February, March, April, December. Organic matter content in the surface horizon is about 2 percent. This component is in the F136XY620GA Flood plain forest, moist ecological site. Nonirrigated land capability classification is 2w. This soil does not meet hydric criteria.

Map unit: MdB - Madison sandy loam, 2 to 6 percent slopes

Component: Madison (100%)

The Madison component makes up 100 percent of the map unit. Slopes are 2 to 6 percent. This component is on interfluves on piedmonts. The parent material consists of clayey residuum weathered from granite and gneiss. Depth to a root restrictive layer is greater than 60 inches. The natural drainage class is well drained. Water movement in the most restrictive layer is moderately high. Available water to a depth of 60 inches (or restricted depth) is moderate. Shrink-swell potential is low. This soil is not flooded. It is not ponded. There is no zone of water saturation within a depth of 72 inches. Organic matter content in the surface horizon is about 1 percent. This component is in the F136XY820GA Acidic upland forest, moist ecological site. Nonirrigated land capability classification is 2e. This soil does not meet hydric criteria.

Map unit: MdC - Madison sandy loam, 6 to 10 percent slopes

Component: Madison (100%)

The Madison component makes up 100 percent of the map unit. Slopes are 6 to 10 percent. This component is on interfluves on piedmonts. The parent material consists of clayey residuum weathered from granite and gneiss. Depth to a root restrictive layer is greater than 60 inches. The natural drainage class is well drained. Water movement in the most restrictive layer is moderately high. Available water to a depth of 60 inches (or restricted depth) is moderate. Shrink-swell potential is low. This soil is not flooded. It is not ponded. There is no zone of water saturation within a depth of 72 inches. Organic matter content in the surface horizon is about 1 percent. This component is in the F136XY820GA Acidic upland forest, moist ecological site. Nonirrigated land capability classification is 3e. This soil does not meet hydric criteria.

Union County, South Carolina

[Minor map unit components are excluded from this report]

Map unit: MeC2 - Madison sandy clay loam, 6 to 10 percent slopes, eroded

Component: Madison (100%)

The Madison component makes up 100 percent of the map unit. Slopes are 6 to 10 percent. This component is on interfluves on piedmonts. The parent material consists of clayey residuum weathered from granite and gneiss. Depth to a root restrictive layer is greater than 60 inches. The natural drainage class is well drained. Water movement in the most restrictive layer is moderately high. Available water to a depth of 60 inches (or restricted depth) is high. Shrink-swell potential is low. This soil is not flooded. It is not ponded. There is no zone of water saturation within a depth of 72 inches. Organic matter content in the surface horizon is about 1 percent. This component is in the F136XY820GA Acidic upland forest, moist ecological site. Nonirrigated land capability classification is 4e. This soil does not meet hydric criteria.

Map unit: MeD2 - Madison sandy clay loam, 10 to 15 percent slopes, eroded

Component: Madison (100%)

The Madison component makes up 100 percent of the map unit. Slopes are 10 to 15 percent. This component is on interfluves on piedmonts. The parent material consists of clayey residuum weathered from granite and gneiss. Depth to a root restrictive layer is greater than 60 inches. The natural drainage class is well drained. Water movement in the most restrictive layer is moderately high. Available water to a depth of 60 inches (or restricted depth) is high. Shrink-swell potential is low. This soil is not flooded. It is not ponded. There is no zone of water saturation within a depth of 72 inches. Organic matter content in the surface horizon is about 1 percent. This component is in the F136XY820GA Acidic upland forest, moist ecological site. Nonirrigated land capability classification is 6e. This soil does not meet hydric criteria.

Map unit: MhF - Madison and Pacolet soils, 15 to 40 percent slopes

Component: Madison (55%)

The Madison component makes up 55 percent of the map unit. Slopes are 15 to 40 percent. This component is on interfluves on piedmonts. The parent material consists of clayey residuum weathered from granite and gneiss. Depth to a root restrictive layer is greater than 60 inches. The natural drainage class is well drained. Water movement in the most restrictive layer is moderately high. Available water to a depth of 60 inches (or restricted depth) is moderate. Shrink-swell potential is low. This soil is not flooded. It is not ponded. There is no zone of water saturation within a depth of 72 inches. Organic matter content in the surface horizon is about 1 percent. This component is in the F136XY820GA Acidic upland forest, moist ecological site. Nonirrigated land capability classification is 7e. This soil does not meet hydric criteria.

Component: Pacolet (40%)

The Pacolet component makes up 40 percent of the map unit. Slopes are 15 to 40 percent. This component is on interfluves on piedmonts. The parent material consists of clayey residuum weathered from granite and gneiss. Depth to a root restrictive layer is greater than 60 inches. The natural drainage class is well drained. Water movement in the most restrictive layer is moderately high. Available water to a depth of 60 inches (or restricted depth) is moderate. Shrink-swell potential is low. This soil is not flooded. It is not ponded. There is no zone of water saturation within a depth of 72 inches. Organic matter content in the surface horizon is about 1 percent. This component is in the F136XY820GA Acidic upland forest, moist ecological site. Nonirrigated land capability classification is 7e. This soil does not meet hydric criteria.

Map Unit Description (Brief, Generated)

Union County, South Carolina

Map unit: Wc - Wehadkee-Chewacla complex

Component: Wehadkee (55%)

The Wehadkee component makes up 55 percent of the map unit. Slopes are 0 to 2 percent. This component is on flood plains on piedmonts. The parent material consists of loamy alluvium. Depth to a root restrictive layer is greater than 60 inches. The natural drainage class is poorly drained. Water movement in the most restrictive layer is moderately high. Available water to a depth of 60 inches (or restricted depth) is moderate. Shrink-swell potential is low. This soil is occasionally flooded. It is not ponded. A seasonal zone of water saturation is at 6 inches during January, February, March, April, May, November, December. Organic matter content in the surface horizon is about 4 percent. This component is in the F136XY600NC Flood plain forest, very wet ecological site. Nonirrigated land capability classification is 4w. This soil meets hydric criteria.

Component: Chewacla (40%)

The Chewacla component makes up 40 percent of the map unit. Slopes are 0 to 2 percent. This component is on flood plains on piedmonts. The parent material consists of loamy alluvium. Depth to a root restrictive layer is greater than 60 inches. The natural drainage class is somewhat poorly drained. Water movement in the most restrictive layer is moderately high. Available water to a depth of 60 inches (or restricted depth) is high. Shrink-swell potential is low. This soil is occasionally flooded. It is not ponded. A seasonal zone of water saturation is at 12 inches during January, February, March, April, November, December. Organic matter content in the surface horizon is about 3 percent. This component is in the F136XY610GA Flood plain forest, wet ecological site. Nonirrigated land capability classification is 3w. This soil does not meet hydric criteria.